

The genome of a Late Pleistocene human from a Clovis burial site in western Montana

Morten Rasmussen^{1*}, Sarah L. Anzick^{2*}, Michael R. Waters³, Pontus Skoglund⁴, Michael DeGiorgio^{5†}, Thomas W. Stafford Jr^{1,6}, Simon Rasmussen⁷, Ida Moltke^{8,9}, Anders Albrechtsen⁸, Shane M. Doyle¹⁰, G. David Poznik¹¹, Valborg Gudmundsdottir⁷, Rachita Yadav⁷, Anna-Sapfo Malaspinas¹, Samuel Stockton White^{V12}, Morten E. Allentoft¹, Omar E. Cornejo¹³, Kristiina Tambets¹⁴, Anders Eriksson^{15,16}, Peter D. Heintzman¹⁷, Monika Karmin¹⁴, Thorfinn Sand Korneliusson¹, David J. Meltzer¹⁸, Tracey L. Pierre¹, Jesper Stenderup¹, Lauri Saag¹⁴, Vera M. Warmuth^{15,19}, Margarida C. Lopes¹⁹, Ripan S. Malhi²⁰, Søren Brunak⁷, Thomas Sicheritz-Ponten⁷, Ian Barnes^{17†}, Matthew Collins²¹, Ludovic Orlando¹, Francois Balloux²², Andrea Manica¹⁵, Ramneek Gupta⁷, Mait Metspalu¹⁴, Carlos D. Bustamante^{23,24}, Mattias Jakobsson^{4,25}, Rasmus Nielsen⁵ & Eske Willerslev¹

Clovis, with its distinctive biface, blade and osseous technologies, is the oldest widespread archaeological complex defined in North America, dating from 11,100 to 10,700 ¹⁴C years before present (BP) (13,000 to 12,600 calendar years BP)^{1,2}. Nearly 50 years of archaeological research point to the Clovis complex as having developed south of the North American ice sheets from an ancestral technology³. However, both the origins and the genetic legacy of the people who manufactured Clovis tools remain under debate. It is generally believed that these people ultimately derived from Asia and were directly related to contemporary Native Americans². An alternative, Solutrean, hypothesis posits that the Clovis predecessors emigrated from southwestern Europe during the Last Glacial Maximum⁴. Here we report the genome sequence of a male infant (Anzick-1) recovered from the Anzick burial site in western Montana. The human bones date to 10,705 ± 35 ¹⁴C years BP (approximately 12,707–12,556 calendar years BP) and were directly associated with Clovis tools. We sequenced the genome to an average depth of 14.4× and show that the gene flow from the Siberian Upper Palaeolithic Mal'ta population⁵ into Native American ancestors is also shared by the Anzick-1 individual and thus happened before 12,600 years BP. We also show that the Anzick-1 individual is more closely related to all indigenous American populations than to any other group. Our data are compatible with the hypothesis that Anzick-1 belonged to a population directly ancestral to many contemporary Native Americans. Finally, we find evidence of a deep divergence in Native American populations that predates the Anzick-1 individual.

The only known Clovis burial and associated mortuary assemblage was found in the Americas at the Anzick site, Montana, in 1968 (refs 6–8) (Fig. 1a, b). Here, approximately 100 stone tools and 15 osseous tool fragments (Fig. 1d, e) (at least one made of elk; Supplementary Information section 3.4) that are technologically consistent with artefacts of the Clovis complex^{9,10} were found in direct association with the partial fragmentary

remains of an infant child (Anzick-1). The human remains were found directly below the Clovis artefacts and were covered with red ochre. Bone from the skeleton was directly dated using XAD-collagen to 10,705 ± 35 ¹⁴C years BP (CAMS-80538) or 12,707–12,556 calendar years BP, close to the end of the Clovis time period¹⁷ (Fig. 1c).

Initial genetic screening of the Anzick-1 skeletal remains using PCR coupled with cloning and Sanger sequencing yielded a mitochondrial DNA (mtDNA) haplogroup assignment of D4h3a (Supplementary Information section 3). The D4h3a haplogroup was verified and further characterized in the subsequent shotgun sequencing of Anzick-1 (Supplementary Information section 12 and Extended Data Fig. 2). D4h3a is one of the rare mtDNA lineages specific to Native Americans, is distributed along the Pacific coast in North and South America among contemporary populations¹¹, and is also present in ancient specimens¹². Its current distribution has been interpreted as evidence for an early coastal migration route¹¹. Our findings of this mtDNA haplogroup inland in the oldest skeleton from the Americas to be mtDNA-typed to date question such interpretation and underscore the view that current distributions of genetic markers are not necessarily indicative of the movement or distribution of peoples in the past³. The Anzick-1 D4h3a does not carry any of the polymorphisms that define the several subgroups of the haplogroup¹³ and is thus placed at the root of D4h3a. Our finding suggests that the origin of the D4h3a branch is likely to be at the upper bound of the previously obtained estimate of 13,000 ± 2,600 calendar years BP¹⁴, or possibly even older.

Shotgun sequencing of the Anzick-1 DNA revealed a highly variable endogenous human DNA content across different extracts, even those recovered from the same bone fragment (0.5–28.2%; Supplementary Information section 4 and Extended Data Table 3). This suggests a considerable influence of microenvironments on long-term DNA preservation across the Anzick-1 bone fragments¹⁵. We obtained an average sequencing depth of 14.4× coverage. On the basis of the observed DNA fragment

¹Centre for GeoGenetics, Natural History Museum of Denmark, University of Copenhagen, Øster Voldgade 5-7, DK-1350 Copenhagen K, Denmark. ²Anzick Family, 31 Old Clyde Park Road, Livingston, Montana 59047, USA. ³Center for the Study of the First Americans, Departments of Anthropology and Geography, Texas A&M University, 4352 TAMU, College Station, Texas 77843-4352, USA. ⁴Department of Evolutionary Biology, Uppsala University, Norbyvägen 18D, 752 36 Uppsala, Sweden. ⁵Department of Integrative Biology, University of California, Berkeley, 4134 Valley Life Sciences Building, Berkeley, California 94720, USA. ⁶AMS 14C Dating Centre, Department of Physics & Astronomy, University of Aarhus, Ny Munkegade 120, DK-8000 Aarhus C, Denmark. ⁷Center for Biological Sequence Analysis, Department of Systems Biology, Technical University of Denmark, Kemitorvet 208, Kgs. Lyngby DK-2800, Denmark. ⁸The Bioinformatics Centre, Department of Biology, University of Copenhagen, Ole Maaloos Vej 5, DK-2200 Copenhagen N, Denmark. ⁹Department of Human Genetics, University of Chicago, 920 E. 58th Street, CLSC 4th floor, Chicago, Illinois 60637, USA. ¹⁰Education Department, Montana State University, Box 5103, Bozeman, Montana 59717, USA. ¹¹Program in Biomedical Informatics and Department of Statistics, Stanford University, Stanford, California 94305, USA. ¹²Anthropology Department, PhD Program, University of Montana, 4100 Mullan Road, no. 217, Missoula, Montana 59808, USA. ¹³School of Biological Sciences, Washington State University, PO Box 644236, Eastlick Hall 395, Pullman, Washington 99164, USA. ¹⁴Department of Evolutionary Biology, Estonian Biocentre and University of Tartu, Riia 23b, 51010 Tartu, Estonia. ¹⁵Department of Zoology, University of Cambridge, Downing Street, Cambridge CB2 3EJ, UK. ¹⁶Integrative Systems Biology Laboratory, King Abdullah University of Science and Technology (KAUST), Thuwal 23955-6900, Kingdom of Saudi Arabia. ¹⁷School of Biological Sciences, Royal Holloway, University of London, Egham, Surrey TW20 0EX, UK. ¹⁸Department of Anthropology, Southern Methodist University, Dallas, Texas 75275, USA. ¹⁹Department of Genetics, Evolution and Environment, University College London, Gower Street, London WC1E 6BT, UK. ²⁰Department of Anthropology and Institute for Genomic Biology, University of Illinois Urbana-Champaign, 209F Davenport Hall, 607 Matthews Avenue, Urbana, Illinois 61801, USA. ²¹BioArCh, Departments of Biology, Archaeology and Chemistry, University of York, Wentworth Way, York YO10 5DD, UK. ²²MRC Centre for Outbreak, Analysis and Modelling, Department of Infectious Disease Epidemiology, Imperial College London, Imperial College Faculty of Medicine, Littlefield Center, Stanford, California 94305, USA. ²³Department of Genetics, School of Medicine, Stanford University, Littlefield Center, Stanford, California 94305, USA. ²⁴Center for Evolutionary and Human Genomics, Stanford University, Littlefield Center, Stanford, California 94305, USA. ²⁵Science for Life Laboratory, Uppsala University, Norbyvägen 18D, 752 36 Uppsala, Sweden. †Present addresses: Earth Sciences Department, Natural History Museum, Cromwell Road, London SW7 5BD, UK (I.B.); Department of Biology, Pennsylvania State University, 502 Wartik Laboratory, University Park, Pennsylvania 16802, USA (M.D.).

*These authors contributed equally to this work.

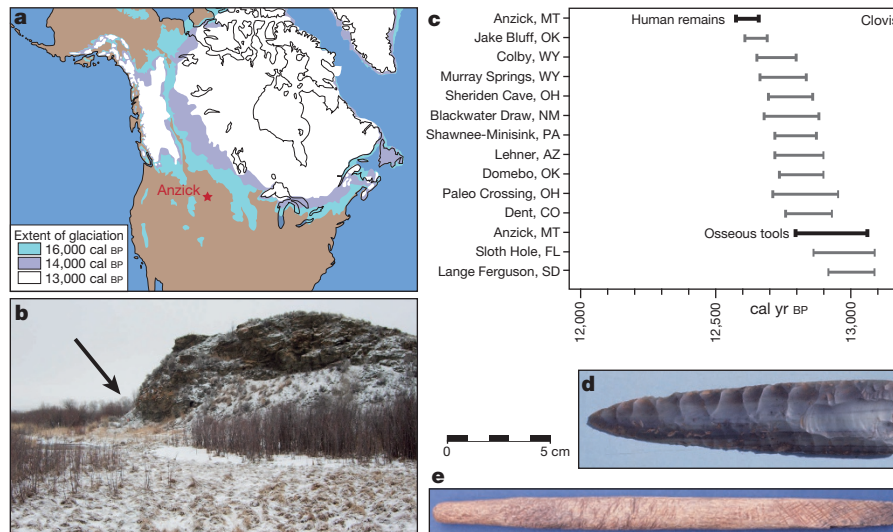


Figure 1 | Geographic and ^{14}C dating overview, and examples of artefacts from the site. **a**, Location of the Anzick site relative to continental glacial positions from 16,000 to 13,000 calendar years BP (cal BP). **b**, Photograph of the

length distribution, we computed molecular half-life estimates¹⁶ for a 100-base pair fragment to be 4,852 and 5,137 years for nuclear DNA and mtDNA, respectively. These are consistent with predictions based on estimated burial temperature and geographical location (Supplementary Information section 7). Nucleotide misincorporation patterns were consistent with increased post-mortem cytosine deamination at DNA fragment termini¹⁷ (Supplementary Information section 8). The mtDNA data provided a contamination estimate with a 95% credibility interval of 0.15–0.38%¹⁸ (Supplementary Information section 9). As the Anzick-1 individual was found to be male, we were also able to quantify contamination levels on the basis of heterozygosity levels seen on the X chromosome¹⁹, which resulted in similarly low contamination estimates (<1.2%, Supplementary Information section 11). Characterization of the error rate yielded an overall estimate of 0.84% (Supplementary Information section 10). Per-library error rates as well as nucleotide-type-specific error rates are shown in Extended Data Fig. 1c; as expected, the error estimates are driven by deamination-related DNA-damage errors.

We determined the Y-chromosome haplogroup to be Q-L54*(xM3) and, along with 15 previously analysed Y-chromosome sequences²⁰, we constructed a tree to illustrate the phylogenetic context within haplogroup Q (Supplementary Information section 13 and Extended Data Fig. 2). Confining our analyses to transversion single nucleotide polymorphisms (SNPs), we leveraged the date of Anzick-1 to estimate a divergence time between haplogroups Q-L54*(xM3) and Q-M3, two of the major founding Y-chromosome lineages of the Americas, of approximately 16,900 years ago (95% confidence interval: 13,000–19,700; Supplementary Information section 13).

We assessed the genome-wide genetic affinity of the Anzick-1 individual to 143 contemporary non-African human populations by computing outgroup f_3 -statistics²¹, which are informative on the amount of shared genetic drift between an individual and other populations. The data set included 52 Native American populations, for which genomic segments derived from recent European and African admixture have been excluded²². We found that the Anzick-1 individual showed a statistically significant closer affinity to all 52 Native American groups than to any extant Eurasian population (Fig. 2). The same conclusion was reached from admixture clustering analyses (Supplementary Information section 14 and Extended Data Fig. 3), and when using D -statistics based on genomic sequence data (Supplementary Information section 16).

Interestingly, the Anzick-1 individual showed less shared genetic history with seven Northern Native Americans from Canada and the Arctic, including three Northern Amerind-speaking groups ('NA' group),

Anzick site. The site is located at the base of the slope at the far left (arrow). **c**, Age of the human remains and osseous tools relative to other Clovis sites. **d**, Clovis fluted projectile point from the site. **e**, Clovis osseous rod from the site.

and the Central American Yaqui (Supplementary Information section 15, Fig. 2), than with 44 Native populations from Central and South America ('SA' group) (Fig. 2). This finding was further supported by allele-frequency-based D -statistics, which strongly reject the hypothesis of a population tree with topology (Anzick-1, (NA, SA)). By contrast, a tree assuming a branching pattern of (NA, (Anzick-1, SA)) was not rejected (Supplementary Information section 15 and Fig. 3).

We investigated two possible scenarios that could explain this pattern: (1) a basal diversification of the NA and SA lineages that predates the Clovis period, with the Anzick-1 individual belonging to the SA lineage (Fig. 3c); and (2) the Anzick-1 individual is basal to both lineages, but the lineages diverged at a time close to approximately 12,600 years ago, and the NA group received subsequent gene-flow from other, perhaps Siberian, populations (Fig. 3b). This latter hypothesis of additional pulses of gene flow has been suggested for the four Na-Dene- and Eskimo-Aleut-speaking groups by a previous study, whereas the three NA groups and Yaqui have been found to carry exclusively 'First American' ancestry²².

We analysed 19 different published Siberian populations and found that allele-frequency-based D -statistics in all cases, with the exclusion of Naukan, were compatible with a diversification pattern of (Siberian, (NA, SA)), with no evidence for gene flow into the NA group (Supplementary Information section 15), a pattern that agrees with previously published results²². This suggests that model (1) is more likely, and that the structure between Native American lineages predates the Anzick-1 individual and thus appears to go back to pre-Clovis times.

We used outgroup f_3 -statistics to evaluate the shared genetic history between all Native American populations and the Anzick-1 genome, the 24,000-year-old human sample from Mal'ta, Siberia⁵ and the 4,000-year-old Saqqaq Palaeo-Eskimo sample from Greenland¹⁹. We again found a closer relationship between Anzick-1 and all Native Americans (Supplementary Information section 15 and Extended Data Fig. 5). Together with the fact that Anzick-1 shows the same relative affinity to western and eastern Eurasians, this suggests that the gene flow from the Mal'ta lineage into Native Americans happened before the NA and SA groups diverged.

Next, we addressed the relationship of the Anzick-1 genome to whole-genome sequences from contemporary humans, including two novel genomes from Karitiana and Mayan individuals, and from the ancient Saqqaq sample¹⁹. To explore the question of direct ancestry, we developed a novel method to assess the amount of genetic drift experienced by each of a pair of populations after their divergence, without making any assumptions about demography (Supplementary Information section

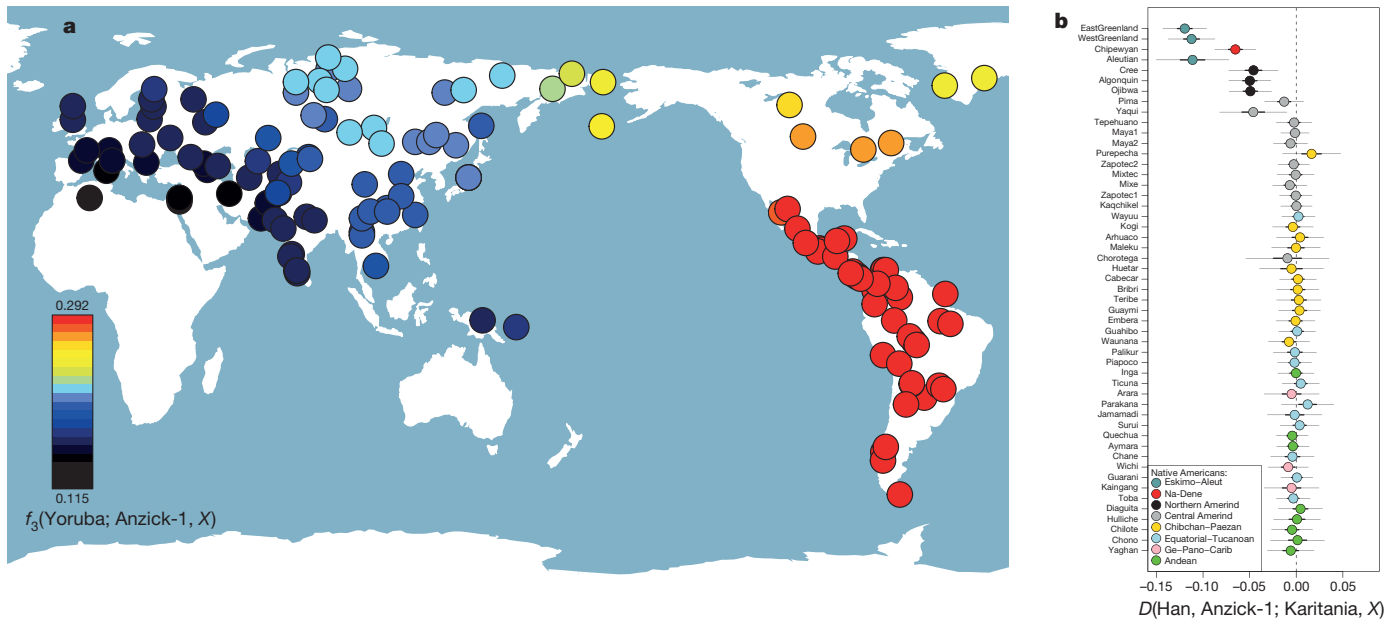


Figure 2 | Genetic affinity of Anzick-1. **a**, Anzick-1 is most closely related to Native Americans. Heat map representing estimated outgroup f_3 -statistics for shared genetic history between the Anzick-1 individual and each of 143 contemporary human populations outside sub-Saharan Africa. **b**, Anzick-1 is less closely related to Northern Native American populations and a Yaqui

individual than to Central and South Native Americans such as the Brazilian Karitiana. We computed D -statistics of the form $D(\text{Han}, \text{Anzick-1}; \text{Karitiana}, X)$ to test the hypothesis that a second Native American population X is as closely related to Anzick-1 as the South American Karitiana is. Thick and thin whiskers represent 1 and 3 standard errors, respectively.

17). If the Anzick-1 individual belonged to a population directly ancestral to a sampled contemporary population, the amount of genetic drift on the Anzick-1 branch should be zero, as it would have experienced no genetic drift since the ‘divergence’ with the sampled population. We find that the data are compatible with the Anzick-1 individual belonging to a population that is directly ancestral to the two South American Karitiana samples, as is the case for the Mayan, after masking the latter for recent European admixture (Fig. 4a, b). By contrast, there is a positive amount of drift on both lineages when comparing Anzick-1 to Saqqaq, Europeans, Asians and Pacific Islanders. This shows that the Anzick-1 sample has diverged from populations from outside the Americas. Furthermore, in agreement with the SNP analyses, *TreeMix*²³ (Fig. 4c

and Supplementary Information section 18) and outgroup f_3 -analyses^{5,21} (Extended Data Figs 5, 6), the Anzick-1 sample is genetically more closely related to Central and South Americans than to any other populations, including the Saqqaq individual from Greenland. After masking the Mayan genome for recent European admixture, *TreeMix* places the Anzick-1 individual in a position in the tree compatible with the hypothesis that it is ancestral to both Mayan and Karitiana, with Anzick-1 exhibiting virtually no drift on its branch since its divergence from other populations (Fig. 4c).

We conclude that the male infant, buried approximately 12,600 years ago with ochre-covered Clovis artefacts at the Anzick site, belonged to a meta-population from which many contemporary Native Americans are

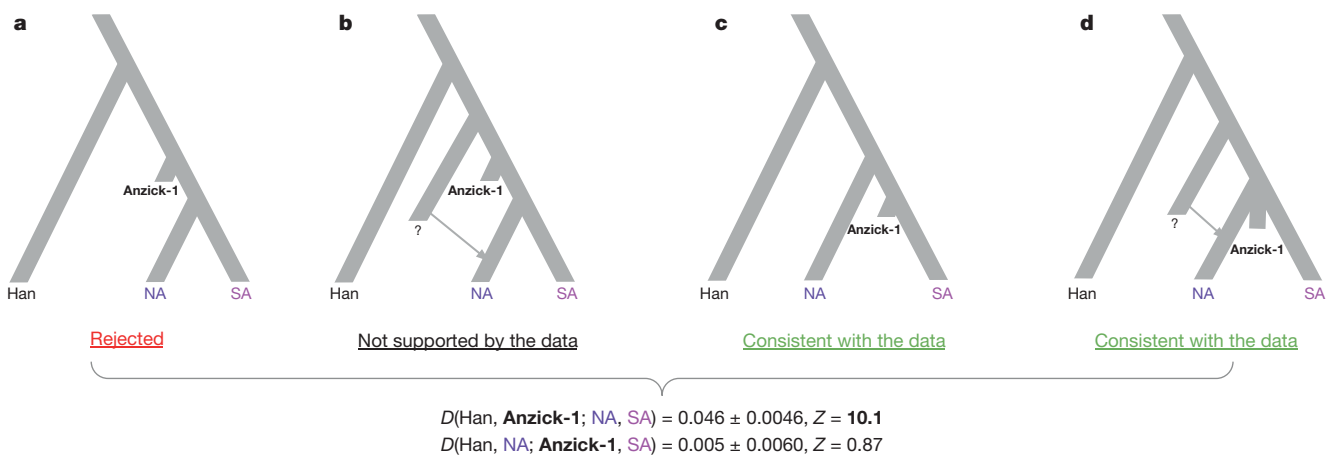


Figure 3 | Simplified schematic of genetic models. Alternative models of the population history behind the closer shared ancestry of the Anzick-1 individual to Central and Southern American (SA) populations than Northern Native American (NA) populations; see main text for further definition of populations. We find that the data are consistent with a simple tree-like model in which NA populations are historically basal to Anzick-1 and SA. We base this conclusion on two D -tests conducted on the Anzick-1 individual, NA and SA. We used Han Chinese as outgroup. **a**, We first tested the hypothesis that Anzick-1 is basal to both NA and SA populations using $D(\text{Han}, \text{Anzick-1}; \text{NA}, \text{SA})$. As in

the results for each pairwise comparison between SA and NA populations (Extended Data Fig. 4), this hypothesis is rejected. **b**, Next, we tested $D(\text{Han}, \text{NA}; \text{Anzick-1}, \text{SA})$; if NA populations were a mixture of post-Anzick-1 and pre-Anzick-1 ancestry, we would expect to reject this topology. **c**, We found that a topology with NA populations basal to Anzick-1 and SA populations is consistent with the data. **d**, However, another alternative is that the Anzick-1 individual is from the time of the last common ancestral population of the Northern and Southern lineage, after which the Northern lineage received gene flow from a more basal lineage.

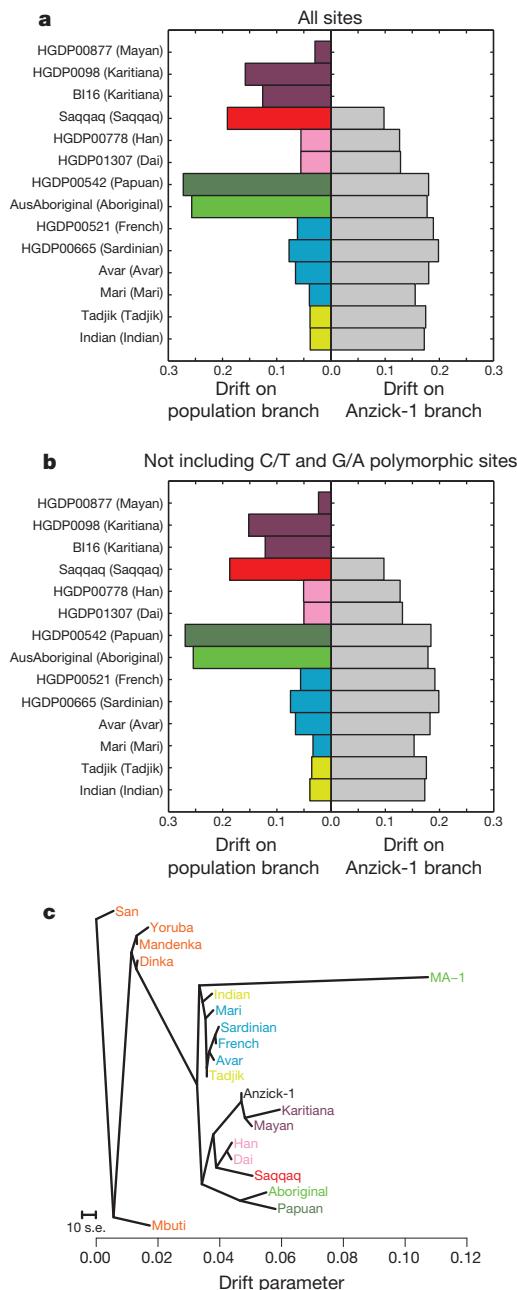


Figure 4 | Estimated drift and maximum likelihood tree. Site patterns and drift estimates for non-African populations versus the Anzick-1 sample. **a**, Data based on conditioning on African polymorphism, non-African populations in colour on the left, Anzick-1 in grey on the right. **b**, Data based on conditioning on African polymorphism and removing sites where a C and T or G and A were observed. **c**, Maximum likelihood tree generated by *TreeMix* using the whole-genome sequencing data, with the Mayan genome masked for European ancestry. HGDP, Human Genome Diversity Project.

descended and is closely related to all indigenous American populations. As such, contemporary Native Americans are effectively direct descendants of the people who made and used Clovis tools and buried this child. In agreement with previous archaeological and genetic studies^{24,25}, our genome analysis refutes the possibility that Clovis originated via a European (Solutrean) migration to the Americas⁴. Furthermore, the Anzick-1 findings do not support the hypothesis, based on cranial data, that American populations around the time of Clovis were subsequently assimilated by more recent migrants who were the ancestors of contemporary Native Americans^{26,27}. The Anzick-1 data thus serves to unify the genetic and archaeological records of early North America, it is consistent

with a human occupation of the Americas a few thousand years before Clovis^{2,3,28}, and demonstrates that contemporary Native Americans are descendants of the first people to settle successfully in the Americas. Our results are also consistent with previous models derived from mtDNA, which imply that Native American populations primarily derive from a single-source population, but that there was a secondary movement into northern North America²⁹. However, several different scenarios are compatible with an early divergence of the NA and SA groups and analyses of more ancient human remains are needed to further test the findings and interpretations from this single individual and to elucidate the complex colonization history of the Arctic and North American populations.

METHODS SUMMARY

We sampled bone fragments from the Anzick-1 skeleton, from the Anzick site in Montana, for ancient DNA and ¹⁴C dating analyses (Supplementary Information sections 1, 2). From DNA extracts we generated Illumina sequencing libraries, which were sequenced on the Illumina HiSeq platform (Supplementary Information sections 3, 4). We verified the authenticity of the ancient DNA through damage patterns and decay rates (Supplementary Information sections 7, 8), and estimated contamination using analyses of both mtDNA and nuclear DNA (Supplementary Information sections 9, 10). To investigate the affinity of the Anzick-1 individual to worldwide modern-day populations we computed outgroup f_3 -statistics^{5,21} using a genome-wide SNP data set of 143 groups collected from multiple studies (Supplementary Information section 15). To test historical models relating the Anzick-1 individual to modern-day Native Americans from a Northern group (Cree, Ojibwa and Algonquin) and a Southern group (44 Central and South American groups), we computed D -statistics²¹ using the full allele frequency information (Supplementary Information section 15). To test whether the Anzick-1 individual could have belonged to a population ancestral to some of the modern populations, we developed a new maximum likelihood method for estimating the length of the branches of a drift tree with two populations (leaves in the tree) represented by two genomes. The method fits a model with the following parameters: the probability of pairwise coalescence within population 1 (c_1), the probability of pairwise coalescence within population 2 (c_2), and the probabilities of genotype patterns in the ancestral population, to the observed counts of joint genotype patterns of the two genomes. These parameters are uniquely determined by the observed genotype configurations. Letting the Anzick-1 individual be represented by population 1, the null hypothesis that it belongs to an ancestral population of a specific modern population (population 2) then formally corresponds to a test of the hypothesis $c_1 = 0$ (Supplementary Information section 17).

Statement regarding legal and ethical issues. Acknowledging the complex ethical and legal issues surrounding the research of Native American human remains in the United States, we have striven not only to comply with federal and state law but also to proactively consult with Native American tribes. The Anzick burial site was discovered on private land and the remains recovered have not been in control of a federally funded museum or federal agency, and thus the Native American Graves Protection and Repatriation Act (NAGPRA) does not apply. Under Montana state law, unmarked human burials are not considered abandoned. Advice provided to the project by members of the Montana State Burial Board, however, confirmed that as no claimant has made a request for the remains, the human remains from the Anzick burial site remain under the control of the landowners, the Anzick family. However, to ensure that Native American concerns were addressed, we have informed nine Native American groups with reservations in the surrounding area of the Anzick site about our work. E.W. and S.M.D. visited in person the cultural representatives of the Northern Cheyenne, Crow, Black Feet and Salish and Kootenai tribes. S.M.D. was in direct contact with the Lakota, Rocky Boys, Assiniboine, Gros Ventre and Chippewa cultural representatives. We received no objections to our research from these groups; however, many of the tribal representatives requested reburial of the remains. The Anzick family is working towards reburial of the human remains from the site.

Online Content Any additional Methods, Extended Data display items and Source Data are available in the online version of the paper; references unique to these sections appear only in the online paper.

Received 3 November 2013; accepted 14 January 2014.

1. Waters, M. R. & Stafford, T. W. Redefining the age of Clovis: implications for the peopling of the Americas. *Science* **315**, 1122–1126 (2007).
2. Goebel, T., Waters, M. R. & O'Rourke, D. H. The late Pleistocene dispersal of modern humans in the Americas. *Science* **319**, 1497–1502 (2008).
3. Meltzer, D. J. *First Peoples in a New World* (Univ. California Press, 2009).

4. Stanford, D. J. & Bradley, B. A. *Across Atlantic Ice: the Origin of America's Clovis Culture* (Univ. California Press, 2012).
5. Raghavan, M. *et al.* Upper Palaeolithic Siberian genome reveals dual ancestry of Native Americans. *Nature* **505**, 87–91 (2014).
6. Lahren, L. & Bonnichsen, R. Bone foreshafts from a Clovis burial in southwestern Montana. *Science* **186**, 147–150 (1974).
7. Owsley, D. W. & Hunt, D. Clovis and early Archaic crania from the Anzick site (24PA506), Park County, Montana. *Plains Anthropol.* **46**, 115–124 (2001).
8. Lahren, L. A. *Homeland* (Cayuse Press, 2006).
9. Bradley, B. A., Collins, M. B. & Hemmings, A. *Clovis Technology* (Archaeological Series 17, 2010).
10. Morrow, J. E. & Fiedel, S. J. in *Paleoindian Archaeology: a Hemispheric Perspective* (eds Morrow, J. E. & Fiedel, S. J.) 123–138 (Univ. Press of Florida, 2006).
11. Perego, U. A. *et al.* Distinctive Paleo-Indian migration routes from Beringia marked by two rare mtDNA haplogroups. *Curr. Biol.* **19**, 1–8 (2009).
12. Kemp, B. M. *et al.* Genetic analysis of early holocene skeletal remains from Alaska and its implications for the settlement of the Americas. *Am. J. Phys. Anthropol.* **132**, 605–621 (2007).
13. van Oven, M. & Kayser, M. Updated comprehensive phylogenetic tree of global human mitochondrial DNA variation. *Hum. Mutat.* **30**, E386–E394 (2009).
14. Behar, D. M. *et al.* A 'Copernican' reassessment of the human mitochondrial DNA tree from its root. *Am. J. Hum. Genet.* **90**, 675–684 (2012).
15. Pruvost, M. *et al.* Freshly excavated fossil bones are best for amplification of ancient DNA. *Proc. Natl Acad. Sci. USA* **104**, 739–744 (2007).
16. Allentoft, M. E. *et al.* The half-life of DNA in bone: measuring decay kinetics in 158 dated fossils. *Proc. R. Soc. Lond. B* **279**, 4724–4733 (2012).
17. Briggs, A. W. *et al.* Patterns of damage in genomic DNA sequences from a Neandertal. *Proc. Natl Acad. Sci. USA* **104**, 14616–14621 (2007).
18. Fu, Q. *et al.* A revised timescale for human evolution based on ancient mitochondrial genomes. *Curr. Biol.* **23**, 553–559 (2013).
19. Rasmussen, M. *et al.* Ancient human genome sequence of an extinct Palaeo-Eskimo. *Nature* **463**, 757–762 (2010).
20. Poznik, G. D. *et al.* Sequencing Y chromosomes resolves discrepancy in time to common ancestor of males versus females. *Science* **341**, 562–565 (2013).
21. Patterson, N. *et al.* Ancient admixture in human history. *Genetics* **192**, 1065–1093 (2012).
22. Reich, D. *et al.* Reconstructing Native American population history. *Nature* **488**, 370–374 (2012).
23. Pickrell, J. K. & Pritchard, J. K. Inference of population splits and mixtures from genome-wide allele frequency data. *PLoS Genet.* **8**, e1002967 (2012).
24. Straus, L. G., Meltzer, D. J. & Goebel, T. Ice Age Atlantis? Exploring the Solutrean-Clovis 'connection'. *World Archaeol.* **37**, 507–532 (2005).
25. Fagundes, N. J. R. *et al.* Mitochondrial population genomics supports a single pre-Clovis origin with a coastal route for the peopling of the Americas. *Am. J. Hum. Genet.* **82**, 583–592 (2008).
26. Jantz, R. L. & Owsley, D. W. Variation among early North American crania. *Am. J. Phys. Anthropol.* **114**, 146–155 (2001).
27. Steele, D. G. & Powell, J. F. in *Who Were the First Americans: Proceedings of the 58th Annual Biology Colloquium* 97–126 (Center for the Study of the First Americans, Oregon State Univ., 1999).
28. Dillehay, T. D. *et al.* Monte Verde: seaweed, food, medicine, and the peopling of South America. *Science* **320**, 784–786 (2008).
29. Kemp, B. M. & Schurr, T. G. in *Human Variation in the Americas* (ed. Auerbach, B. M.) 12–50 (Southern Illinois Univ., 2010).

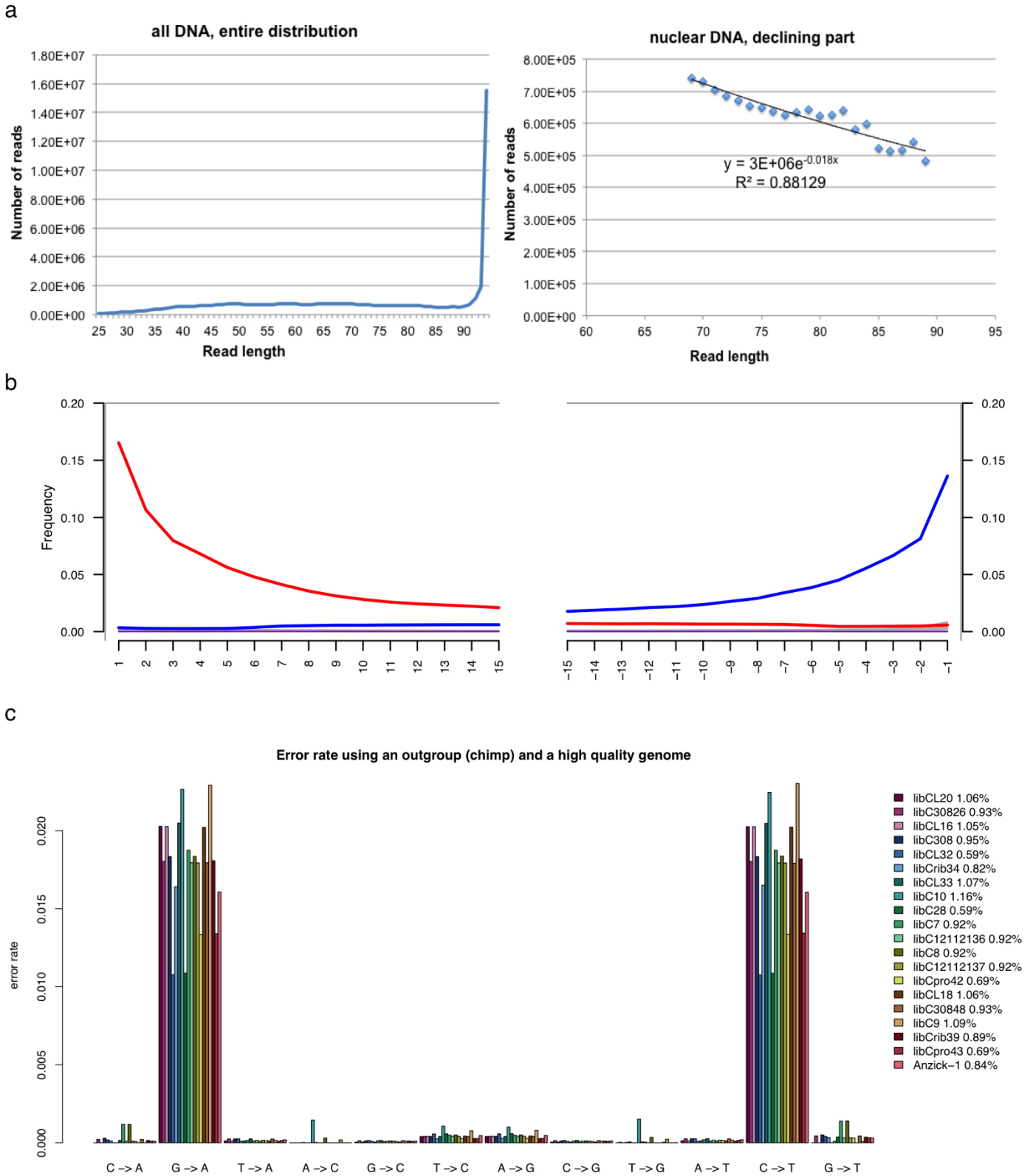
Supplementary Information is available in the online version of the paper.

Acknowledgements We thank the Danish National High-throughput DNA Sequencing Centre for help with sequencing. B. Henn and J. Kidd for assistance with Human

Genome Diversity Project data, J. Keene for help with illustrations, M. Li, P. L. F. Johnson and M. Stoneking for help with the mtDNA analysis, L. A. Lahren for input to the site description and for establishing contact with the Native American groups, and J. E. Morrow, S. Fiedel and E. Lorenzen for comments on the manuscript. GeoGenetics were supported by the Lundbeck Foundation and the Danish National Research Foundation (DNRF94). M.D. was supported by the US National Science Foundation (grant DBI-1103639). A.-S.M. was supported by the Swiss National Science Foundation. G.D.P. was supported by National Science Foundation (NSF) graduate research fellowship DGE-1147470. M.M., M.K., K.T. and L.S. were supported by the European Regional Development Fund through the Centre of Excellence in Genomics to Estonian Biocentre and University of Tartu, Estonian Basic Research (grant SF0270177As08) and Estonian Science Foundation (grant 8973). Computations in Uppsala were performed on resources provided by SNIC-UPPMAX (project b2012063) and in Tartu using the High Performance Computing Centre of the University of Tartu. A.E., V.M.W., M.C.L., F.B. and A.M. were supported by the Biotechnology and Biological Sciences Research Council (grant P25032 and BB/H005854/1). We thank the North Star Archaeological Research Program, Center for the Study of the First Americans, Texas A&M University, E. Hill, and Stafford Research, Inc. for funding some of the project.

Author Contributions E.W., S.L.A., M.R.W. and T.W.S. conceived the project. E.W. headed the project. E.W. and M.R. designed the research project setup. R.N. supervised the bioinformatical and population genetic analyses with input from M.J. S.M.D., R.S.M. and T.L.P. helped with ethics and contact to local communities. S.L.A. and M.R.W. provided access to the Anzick-1 sample and the archaeological context, with input from S.S.W. and D.J.M. T.W.S. performed AMS ¹⁴C dating, stable isotope analyses and provided geochemical and geoaerarchaeological assessments. S.L.A. and J.S. performed initial mtDNA screening experiments. Elk extracts were processed by P.D.H. and I.B. Ancient DNA extractions and library constructs for shotgun sequencing and preparation for sequencing was done by M.R. O.E.C. prepared the two modern genomes. M.R. and S.R. did initial bioinformatics and mapping of the ancient sample. Mapping of modern samples, and genotype calls was done by S.R., with input from T.S.K., A.E., V.M.W. and M.C.L. S.R., T.S.-P. and S.B. provided super computing resources. O.E.C. and S.R. did phasing and ancestry painting, with input from A.E., V.M.W. and M.C.L. M.E.A. and M.C. did half-life estimates, with input on geology from T.W.S. DNA damage patterns were done by M.R. and L.O. mtDNA consensus and damage estimate was done by A.-S.M. I.M. and A.A. performed the X-chromosome contamination estimates, error rate estimates and *D*-statistic analyses on genomic sequence data. G.D.P. conducted Y-chromosome analysis with input from C.D.B. M.M. did ADMIXTURE analysis. K.T., M.K. and M.M. did mtDNA characterization. P.S. did *f*₃-statistics on SNP array data and tested Native American population models using *D*-statistics. M.D. performed *TreeMix* analysis and genome-wide *f*₃-statistics. R.N. and M.D. developed and implemented the ancestry test. M.R., S.L.A., M.R.W., P.S., M.D., R.N. and E.W. wrote most of the manuscript with input from T.W.S., M.E.A., A.-S.M., S.R., I.M., A.A., G.D.P., K.T., M.M., R.G., V.G., R.Y., P.D.H., O.E.C., M.C., F.B., A.M., L.S. and the remaining authors.

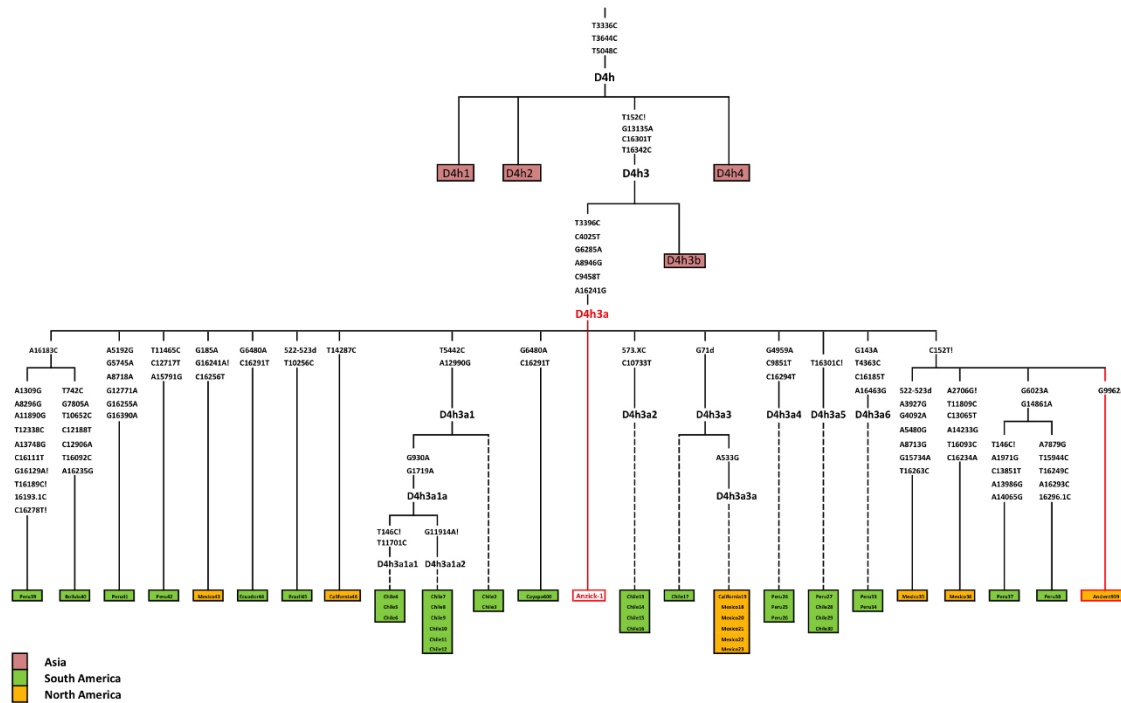
Author Information Sequence data (fastq files) for Anzick-1 is available for download through NCBI SRA accession number SRX381032. Additionally, alignments and genotype calls are available for download at <http://www.cbs.dtu.dk/suppl/clovis/>. Raw reads (fastq files) and alignments (BAM files) for the two modern genomes sequenced in this study are available for demographic research under data access agreement with E.W. The *Cervus elaphus* sequences are available under GenBank accessions KF906070, KF906071 and KF906072. Reprints and permissions information is available at www.nature.com/reprints. The authors declare no competing financial interests. Readers are welcome to comment on the online version of the paper. Correspondence and requests for materials should be addressed to E.W. (ewillerslev@snm.ku.dk).



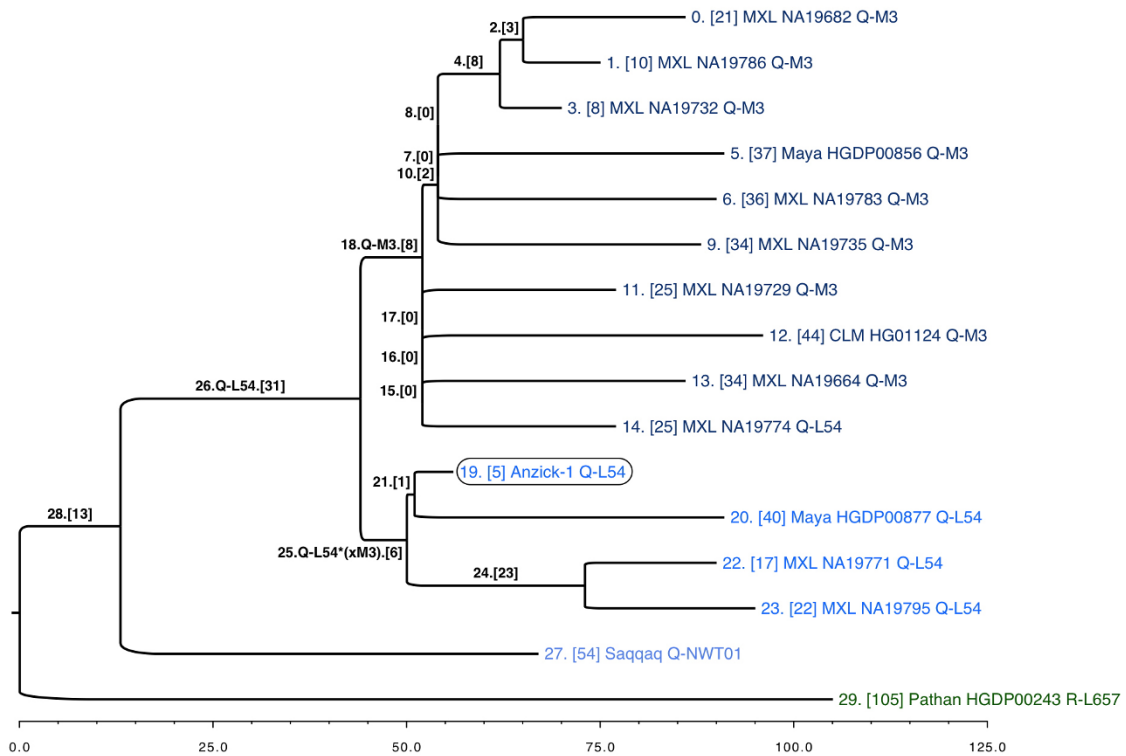
Extended Data Figure 1 | DNA fragmentation, damage and type-specific error. **a**, Left, fragment length distribution of the Anzick-1 DNA sequences mapping to a human reference genome. The maximum read length with the applied chemistry on the HiSeq Illumina platform is 94 base pairs (100 – 6 base pair index read), hence the large peak at this length simply represents the entire tail of the distribution. Right, the declining part of the distribution for the

nuclear DNA, and the fit to an exponential model. The decay constant (λ) is estimated to 0.018. **b**, Damage patterns for the Anzick-1 individual in a random 0.5% subset of all mapped reads. Mismatch frequency relative to the reference as function of read position, C to T in red and G to A in blue. **c**, Type-specific error rates for the Anzick-1 sample and the individual libraries. Estimates of overall error rates are given on the right.

a



b

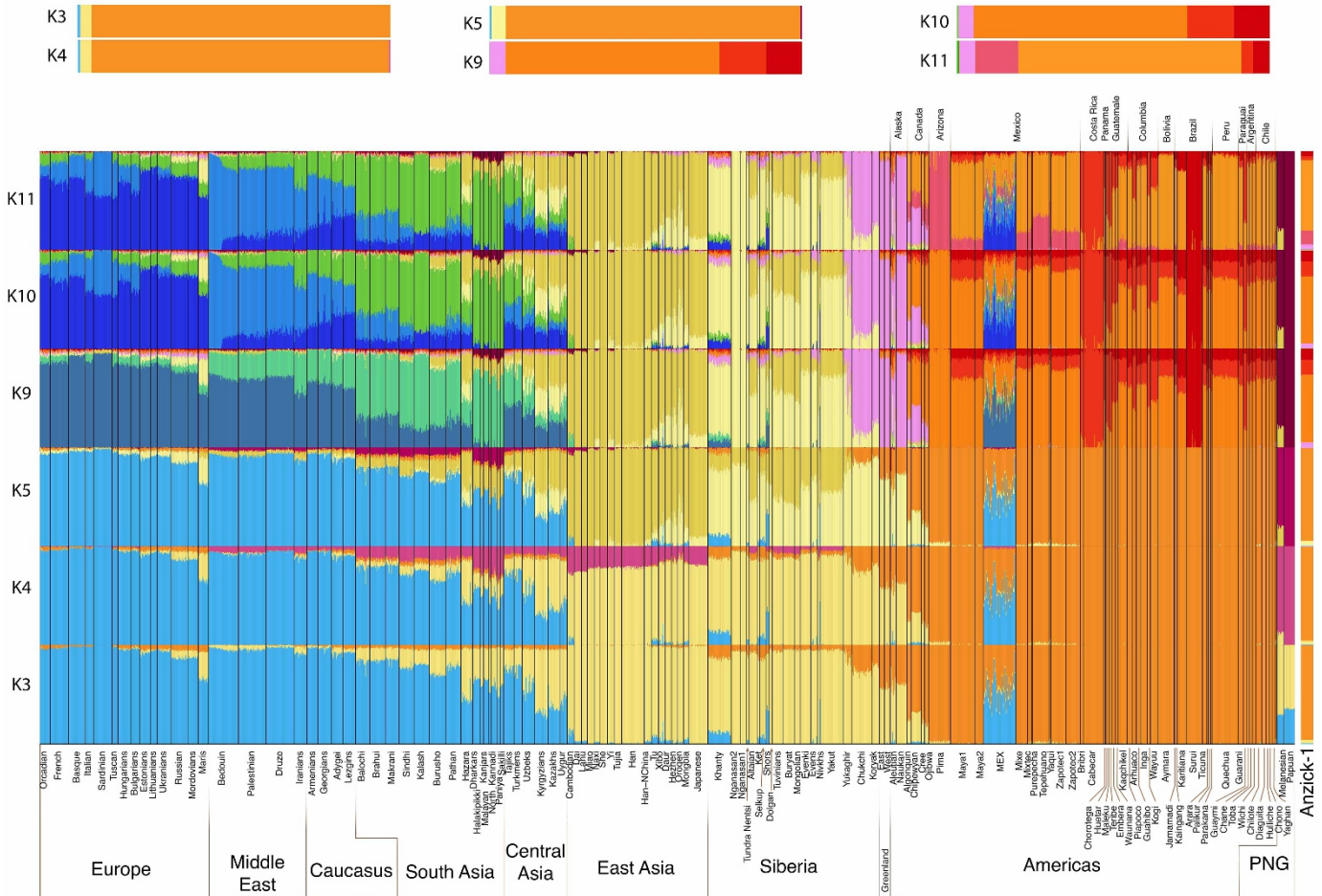


Extended Data Figure 2 | mtDNA and Y-chromosome subtrees.

a, Schematic phylogenetic tree of mtDNA haplogroup D4h3 and its sub-branch D4h3a. Mutations from the root of haplogroup D4h are specified only for haplogroup D4h3a lineage; diagnostic mutations are shown only for defined sub-branches on solid lines. The haplotypes of Anzick-1, identical with the root haplotype of D4h3a, and an ancient full sequence from the northwestern coast of North America (Ancient939), are indicated in red. Insertions are indicated with ‘.’ followed by a number of inserted nucleotides (X if not specified), deletions are indicated with ‘d’ and back mutations to ancestral state with ‘!’. The geographical spread of sub-branches of D4h is shown with different colours specified in figure legend. **b**, Placement of Anzick-1

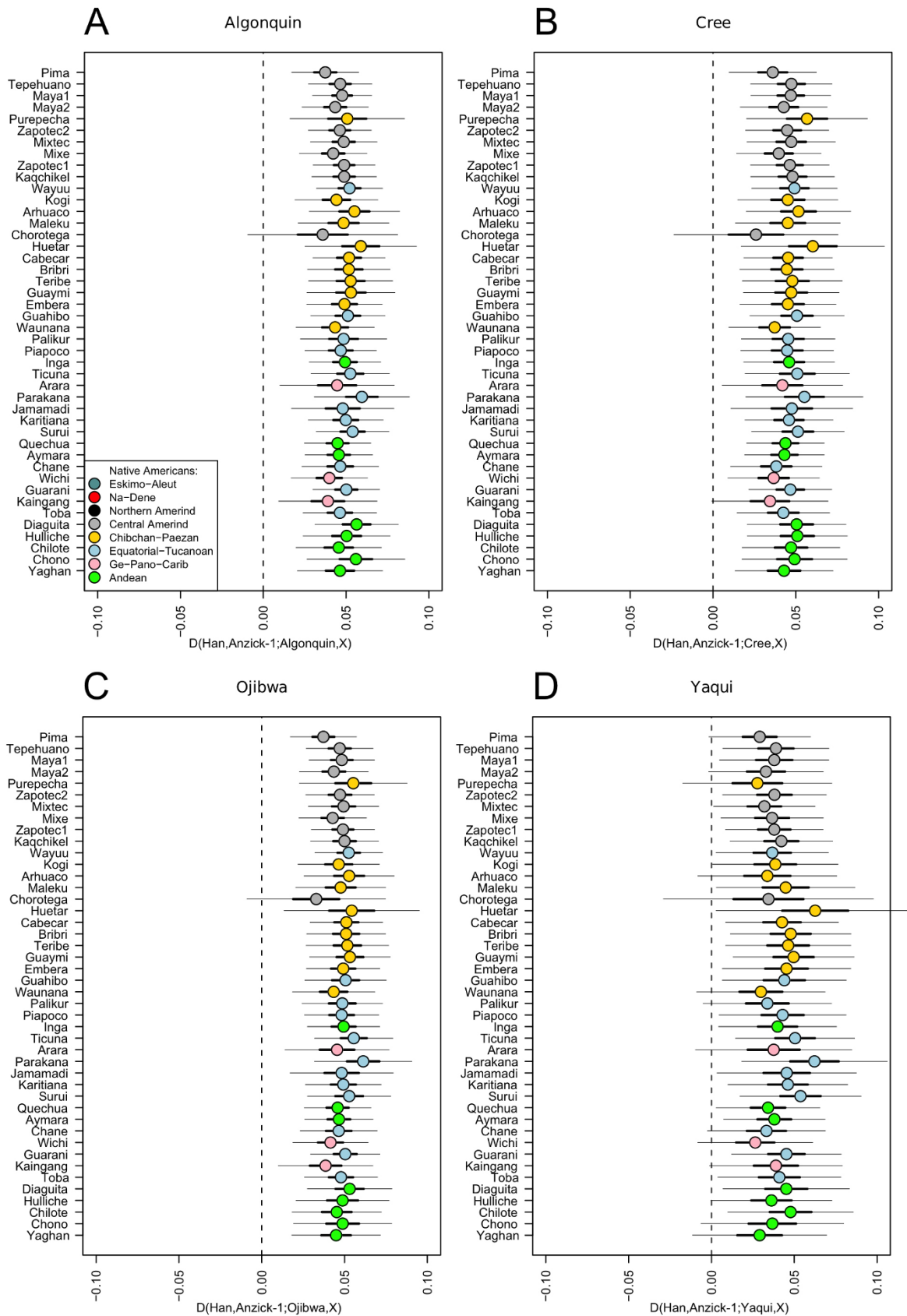
within the Y-chromosome phylogeny. Anzick-1 (circled) represents Y-chromosome haplogroup Q-L54*(xM3) (blue), which is offset by haplogroup Q-M3 (dark blue). The lineage carried by the ancient Saqqaq Palaeo-Eskimo (light blue) constitutes an outgroup to Q-L54. Each branch is labelled by an index and the number of transversion SNPs assigned to the branch (in brackets). Terminal taxa (individuals) are also labelled by population, ID and haplogroup. Branches 21 and 25 represent the most recent shared ancestry between Anzick-1 and other members of the sample. Branch 19 is considerably shorter than neighbouring branches, which have had an additional ~12,600 years to accumulate mutations.

Anzick-1



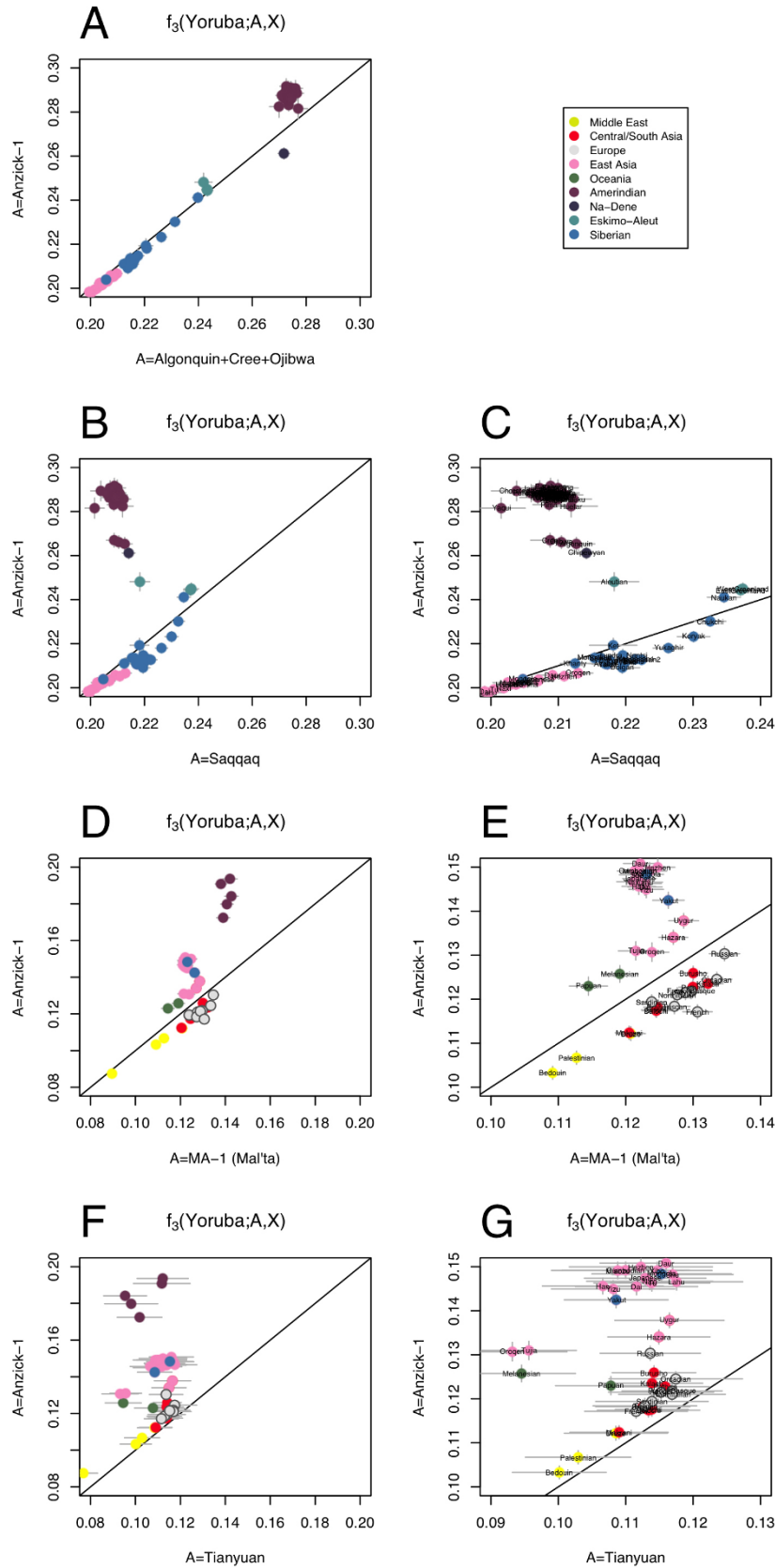
Extended Data Figure 3 | Ancestry proportions of Anzick-1 as determined by Admixture assuming the number of hypothetical ‘ancestral’ populations or genetic components, K, is 3 to 5 and 9 to 11 for a set of 135 extant Eurasian, Oceanian and New World populations. Shown are results from one of the converged runs at each K. We note that the model at K = 11 was found to have the best predictive accuracy as determined by the lowest cross

validation index values (see Supplementary Information). At each K each sample is represented by a stacked vertical bar whereas these of Anzick-1 are magnified and presented horizontally at the top. Note that irrespective of the number of genetic components, K, assumed, the Anzick-1 sample shares all the components present in different contemporary Native American populations.



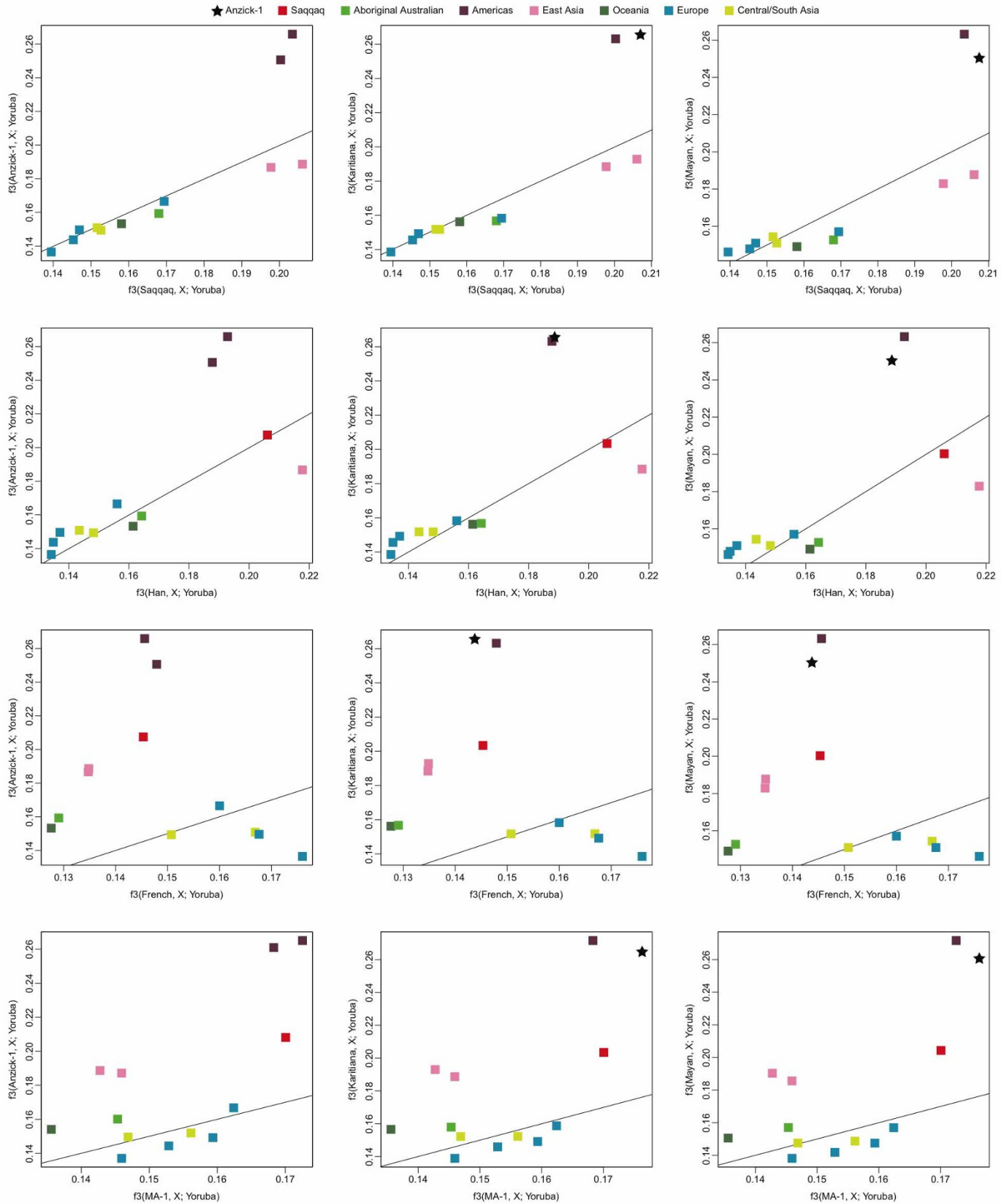
Extended Data Figure 4 | Anzick-1 is closer to Central/Southern Native Americans than Northern Native Americans. a–d, The closer relationship between Anzick-1 and Southern Native Americans compared to Algonquin, Cree, Ojibwa and a Yaqui individual is consistent for different 44 Southern and

Central Native American populations to Anzick-1. We used the test $D(\text{Han, Anzick-1; Algonquin/Cree/Ojibwa/Yaqui, Central/Southern Native Americans})$. Thick and thin whiskers represent 1 and 3 standard errors, respectively.



Extended Data Figure 5 | Outgroup f_3 -statistics contrasted for different combinations of populations. a, Shared genetic history with Anzick-1 compared to shared genetic history with the three Northern Amerind-speaking populations. **b, c**, Shared genetic history with the Anzick-1 individual

compared to the ~4,000-year-old Saqqaq from Greenland. **d, e**, Anzick-1 compared to shared genetic history with the 24,000-year-old MA-1 individual from Central Siberia. **f, g**, Shared genetic history with Anzick-1 compared to shared genetic history with the 40,000-year-old Tianyuan individual from China.



Extended Data Figure 6 | Pairwise outgroup f_3 statistics computed using Saqqaq, Han, French or ancient MA-1 (Mal'ta) on the x-axis and Anzick-1, Karitiana or Mayan on the y-axis. The black line indicates the $y = x$ line.

Extended Data Table 1 | Accelerator Mass Spectrometry (AMS) ¹⁴C and stable isotope analyses of human bone and antler artefacts from the Anzick site, Montana

AMS LAB NO.	Chemical Fraction Dated	¹⁴ C Age, RC yr.± SD	¹⁴ C Date, CAL BP (95.4% C.I.)	δ ¹⁵ N ‰ (AIR)	δ ¹³ C ‰ (VPDB)	Collagen Yield (wt%)	%N	%C	C/N (atomic ratio)	Year Measured	Ref
Red, Hematite-Stained Petrous Bone (ANZICK-1)											
AA-313A	Decalcified Collagen	8690±310								1984	Stafford, 1987
AA-313B	Untreated Gelatin	10,500±400								1984	Stafford, 1987
AA-2978	Aspartic acid	10,240±120								1990	Stafford, 1991
AA-2982	Alanine	10,370±130								1990	Stafford, 1991
AA-2980	Hydroxyproline	10,710±100								1990	Stafford, 1991
AA-2979	Glutamic acid	10,820±100								1990	Stafford, 1991
AA-2981	Glycine	10,940±90								1990	Stafford, 1991
CAMS-80535	Decalcified Collagen	10,580±35		+9.1	-17.6	-	-	-	-	2001	This study
CAMS-80536	KOH-Collagen	10,525±35		+8.6	-18.1	-	-	-	-	2001	This study
CAMS-80537	Gelatin	10,610±30		+10.1	-18.0	-	-	-	-	2001	This study
CAMS-80538	XAD-Gelatin	10,705±35	12,722-12,590	-	-	-	-	-	-	2001	This study
Beta-163833	Alkali Collagen	10,780±40	12,746-12,660	-	-21.2	-	-	-	-	2006	Morrow & Gnecco, 2006
SR-8149	KOH-Collagen	-		+10.5	-18.0	22.7	15.7%	43.9%	3.26	2013	This study
SR-8149	Gelatin	-		+11.1	-17.9	22.7	14.4%	40.0%	3.24	2013	This study
SR-8151	KOH-Collagen	-		+11.0	-17.9	18.7	14.9%	41.9%	3.29	2013	This study
SR-8151	Gelatin	-		+11.6	-17.8	18.7	14.7%	41.2%	3.26	2013	This study
Antler Rods											
Specimen #118/119											
UCIAMS-61661	XAD-Collagen	11,025±30	13,010-12,777	-	-	-	-	-	-	2006	This study
Beta-163832	Alkali Collagen	11,040±60	13,053-12,753	-	-22.5	-	-	-	-	2006	Morrow & Gnecco, 2006
Specimen #122											
Beta-168967	Alkali Collagen	11,040±40	13,040-12,780	-	-18.2	-	-	-	-	2006	Morrow & Gnecco, 2006
	Average, 3-rods	11,035±45	13,039-12,763								

The previously published ¹⁴C measurements are provided for reference. Some of the analyses were carried out to collect stable isotope and geochemistry data, and thus show no age information. Calibrated ages using IntCal 09 are given only for ¹⁴C dates completed since 2006 and for chemical fractions considered the highest purity and having the greatest accuracy; calibration of chemically impure chemical fractions is not warranted. AA, NSF-Arizona Accelerator Mass Spectrometry Facility, Tucson; Beta, Beta Analytic, Florida; CAMS, Center for Accelerator Mass Spectrometry, Lawrence Livermore National Laboratories, Livermore, California; SR, Stafford Research, Boulder, Colorado. '-' indicates not tested.

Extended Data Table 2 | Statistics of the genome sequence data used in the study and high-confidence genotype calls

Sample	Region	Population	Reference	Gender	Avg. Depth	Cov >1X	HomRef	Het	HomAlt	Accessible
DNK02	Africa	Dinka	Meyer <i>et al</i> , 2012	Male	24.3	0.90	1,356,439,142	1,194,183	653,791	1,358,287,116
HGDP00456	Africa	Mbuti	Meyer <i>et al</i> , 2012	Male	20.3	0.90	1,333,191,748	1,198,421	741,996	1,335,132,165
HGDP00521	Europe	French	Meyer <i>et al</i> , 2012	Male	22.6	0.90	1,352,074,026	928,373	611,106	1,353,613,505
HGDP00542	SE Asia	Papuan	Meyer <i>et al</i> , 2012	Male	21.6	0.90	1,343,127,185	745,786	753,954	1,344,626,925
HGDP00665	Europe	Sardinian	Meyer <i>et al</i> , 2012	Male	19.9	0.90	1,334,884,400	908,557	606,234	1,336,399,191
HGDP00778	Han	Han	Meyer <i>et al</i> , 2012	Male	22.3	0.90	1,349,104,846	879,299	668,621	1,350,652,766
HGDP00927	Africa	Yoruba	Meyer <i>et al</i> , 2012	Male	26.7	0.90	1,361,142,931	1,221,258	664,333	1,363,028,522
HGDP00998	S. America	Karitiana	Meyer <i>et al</i> , 2012	Male	21.3	0.90	1,343,817,819	667,456	753,001	1,345,238,276
HGDP01029	Africa	San	Meyer <i>et al</i> , 2012	Male	26.9	0.90	1,362,464,890	1,273,369	774,869	1,364,513,128
HGDP01284	Africa	Mandenka	Meyer <i>et al</i> , 2012	Male	20.6	0.90	1,338,712,364	1,210,852	646,656	1,340,569,872
HGDP01307	SE Asia	Dai	Meyer <i>et al</i> , 2012	Male	23.8	0.90	1,350,414,031	879,716	660,662	1,351,954,409
HGDP00877	S. America	Mayan	This study	Male	13.2	0.90	1,130,447,805	673,358	547,730	1,131,668,893
BI16	S. America	Karitiana	This study	Female	23.4	0.89	1,278,750,988	664,223	684,479	1,280,099,690
Avar	SC Asia	Avar	Raghavan <i>et al</i> , 2013	Male	12.8	0.83	622,360,039	468,944	299,356	623,128,339
Indian	SC Asia	Indian	Raghavan <i>et al</i> , 2013	Female	15.9	0.89	861,422,992	643,238	389,937	862,456,167
Mari	SC Asia	Mari	Raghavan <i>et al</i> , 2013	Male	12.0	0.87	235,202,480	199,301	120,287	235,522,068
Tadjik	SC Asia	Tajik	Raghavan <i>et al</i> , 2013	Male	16.4	0.88	939,846,482	687,749	431,934	940,966,165
AusAboriginal	SE Asia	Australian Aboriginal	Rasmussen <i>et al</i> , 2011	Male	6.3	0.50	356,126,648	240,732	220,901	356,588,281
Saqqaq	Greenlander	Saqqaq	Rasmussen <i>et al</i> , 2010	Male	12.8	0.79	515,972,797	307,585	306,065	516,586,447
Anzick-1	N. America	Clovis	This study	Male	14.4	0.87	780,953,901	864,870	409,731	782,228,502

AvgDepth, average depth; Cov >1, fraction of the genome covered with at least 1 read; Het: heterozygote call; HomAlt, Homozygote alternative call; HomRef, Homozygote reference call.

Extended Data Table 3 | Sequencing and mapping statistics for the Anzick-1 libraries

Library	Raw Reads	Per cent human reads	Mapped human reads \geq Q30	Final BAM	Per cent clonality
C10	55,495,972	0.5%	289,526	96,136	67%
C121121_36	2,000,862,136	24.6%	491,779,235	116,018,652	76%
C121121_37	1,938,412,150	24.8%	481,682,594	100,596,004	79%
C28	412,441,694	27.8%	114,736,785	89,356,892	22%
C30_8	943,369,850	22.7%	214,367,643	21,016,810	90%
C30_8_26	1,234,827,852	23.5%	289,965,256	18,404,080	94%
C30_8_48	1,116,970,391	23.4%	261,200,675	15,489,743	94%
C7	531,754,382	12.0%	63,602,547	8,025,652	87%
C8	298,045,766	10.5%	31,415,268	7,273,279	77%
C9	247,005,820	0.9%	2,234,390	171,718	92%
CL16	614,007,221	22.1%	135,844,895	28,405,912	79%
CL18	803,188,531	21.6%	173,273,845	35,132,866	80%
CL20	695,954,288	21.7%	150,806,716	29,319,798	81%
CL32	477,347,711	28.2%	134,386,357	108,903,306	19%
CL33	791,303,957	21.4%	169,518,285	25,024,524	85%
Cpro_42	201,998,907	8.3%	16,846,370	3,381,783	80%
Cpro_43	305,882,477	8.3%	25,418,416	2,896,283	89%
Crib_34	323,616,468	0.9%	2,983,594	594,741	80%
Crib_39	281,843,911	0.9%	2,447,883	302,525	88%
Total	13,274,329,484	20.8%	2,762,800,280	610,410,704	78%

Extended Data Table 4 | Site patterns and drift estimates for non-African populations versus the Anzick-1 sample

Including all sites								
ID	Population	n(AAAa)	n(AaAA)	n(AAaa)	n(AaAa)	n(AAAA)	Drift in population	Drift in Anzick-1
HGDP00877 (masked)	Mayan	123095	112507	38900	76913	1064893	0.0294	0.0000
HGDP00998 BI16	Karitiana	222029	162274	77002	111472	1791319	0.1581	0.0000
	Karitiana	196546	150372	66032	105219	1630510	0.1258	0.0000
	Saqqaq	152815	129619	71706	71545	1179386	0.1911	0.0979
HGDP00778	Han	210095	237386	97103	124521	1703214	0.0553	0.1266
HGDP01307	Dai	211459	239636	98327	125610	1713361	0.0554	0.1283
HGDP00542	Papuan	237801	200257	140039	95850	1688750	0.2725	0.1802
	Aboriginal	116797	100838	67763	48350	847186	0.2569	0.1774
HGDP00521	French	212922	265527	112889	122188	1661041	0.0617	0.1890
HGDP00665	Sardinian	211703	261689	116240	118827	1633910	0.0772	0.1984
	Avar	161692	197302	84076	92078	1262525	0.0653	0.1804
	Mari	67063	81810	32757	40631	547086	0.0397	0.1554
	Tadjik	195832	247682	99654	118142	1567438	0.0385	0.1748
	Indian	170384	214686	86426	103309	1371359	0.0382	0.1722

Excluding sites where a C and T or G and A were observed								
ID	Population	n(AAAa)	n(AaAA)	n(AAaa)	n(AaAa)	n(AAAA)	Drift in population	Drift in Anzick-1
HGDP00877 (masked)	Mayan	38605	35517	12138	24518	334804	0.0232	0.0000
HGDP00998 BI16	Karitiana	68442	51065	24000	34758	554162	0.1519	0.0000
	Karitiana	60878	47002	20607	33087	509629	0.1216	0.0000
	Saqqaq	46180	39448	21528	21683	358284	0.1869	0.0974
HGDP00778	Han	64920	74011	29884	38635	527612	0.0507	0.1273
HGDP01307	Dai	65190	74986	30472	39117	530308	0.0501	0.1316
HGDP00542	Papuan	73369	62598	43620	29859	522442	0.2693	0.1842
	Aboriginal	34529	30008	20184	14512	250288	0.2544	0.1787
HGDP00521	French	65748	83094	34912	38023	514107	0.0563	0.1915
HGDP00665	Sardinian	65549	81338	35819	36721	506155	0.0749	0.1987
	Avar	49028	60027	25643	27920	384344	0.0657	0.1825
	Mari	19666	24153	9541	12091	160779	0.0334	0.1531
	Tadjik	60041	76457	30652	36532	483570	0.0357	0.1758
	Indian	52265	65827	26564	31632	420851	0.0391	0.1728

Top, data based on conditioning on African polymorphism. Bottom, data based on conditioning on African polymorphism and removing sites where a C and T or a G and A were observed.