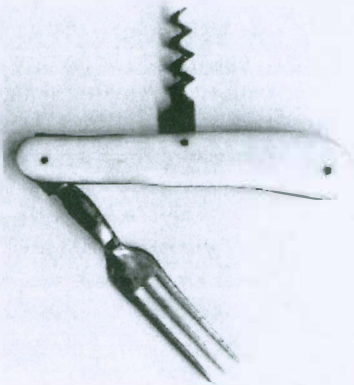


east in
chief part
volves
s we had
ion of
ears, p.

issue of

ector for
ciety -
s when
blish-
tiation.
s Deputy
. She is
attle Em-
875-1945
to Mexico:
biography
ntact Joy



Henry Mayer's Folding Utensil Displayed at Santa Fe Trail Center

Now on display at the Santa Fe Trail Center is a unique utensil with a direct connection to the Santa Fe Trail. The folding utensil belonged to Henry Mayer, and was donated to the museum by Mr. Peter Levy. (It was donated over two years ago, and unveiled for Rendezvous 2022.) The tool includes a fork and bottle opener. Mr. Mayer would have kept this handy tool on his person at all times, and it would have been used on a regular basis on his travels along the Santa Fe Trail. The nineteenth-century folding cutlery has ivory scales and is possibly Bavarian in origin, although there is no visible hallmark to identify the maker. Similar utensils were also made in England and the United States. This personal effect would have been generally used by a gentleman of the time, such as a merchant or tradesmen. A fixed blade knife was often used by hunters and soldiers. †



dence,"
is-
posium
ll be

