



National Trails Office (NTIR) Resource Information Management (RIM)

OCTA Mapping Workshop

September 9-11, 2021

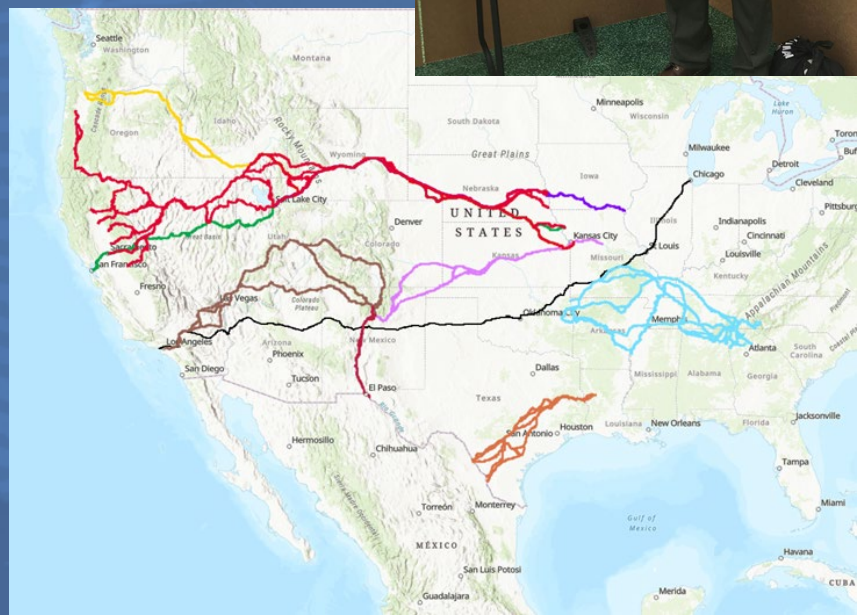
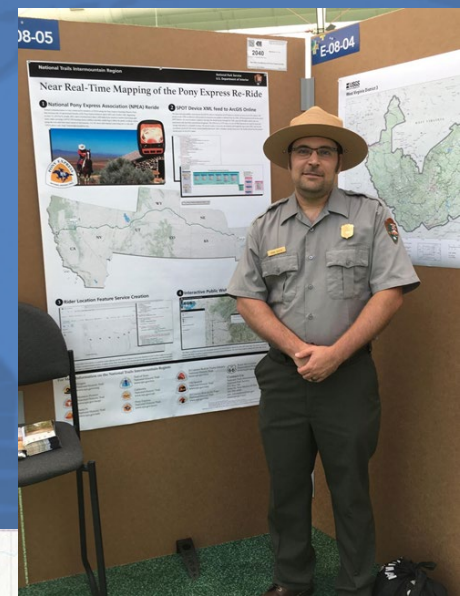
National Park Service – National Trails

Brian Deaton – GIS Specialist



RIM Team

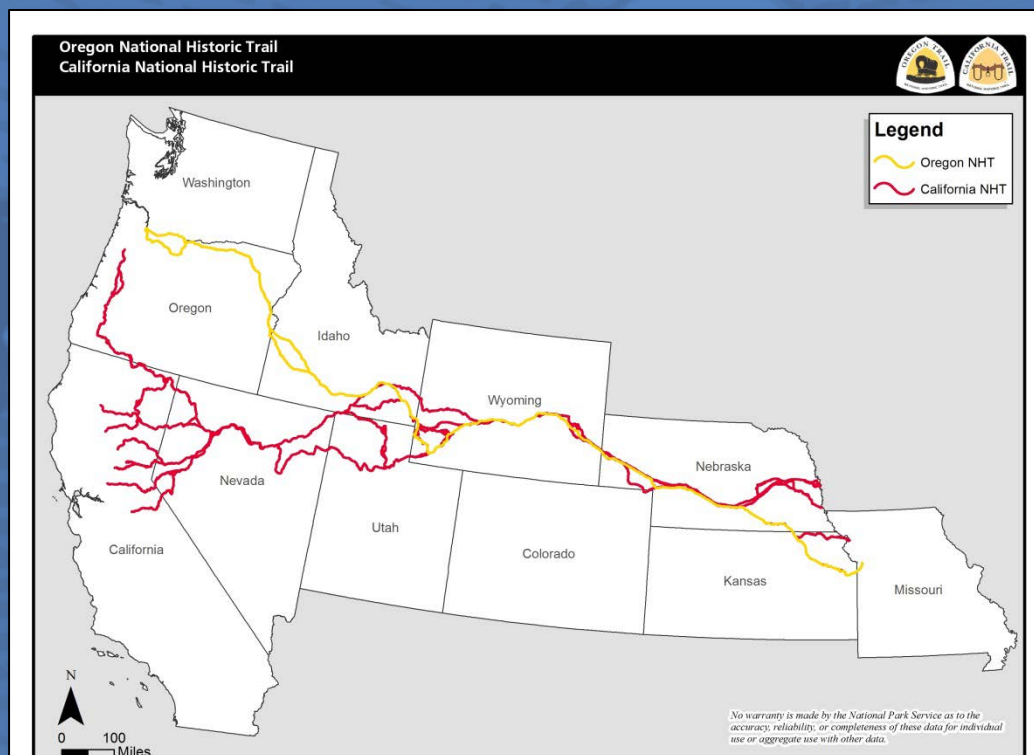
- Geographic Information System (GIS) Support
- Capture, store, manage, analyze, retrieve, and share Geographic Information about the National Historic Trails
- Enable Innovative Methods to Identify and Protect the NHT
- Increase Partnerships, Public Awareness, Use, and Enjoyment through GIS Products and Technology





California and Oregon NHTs

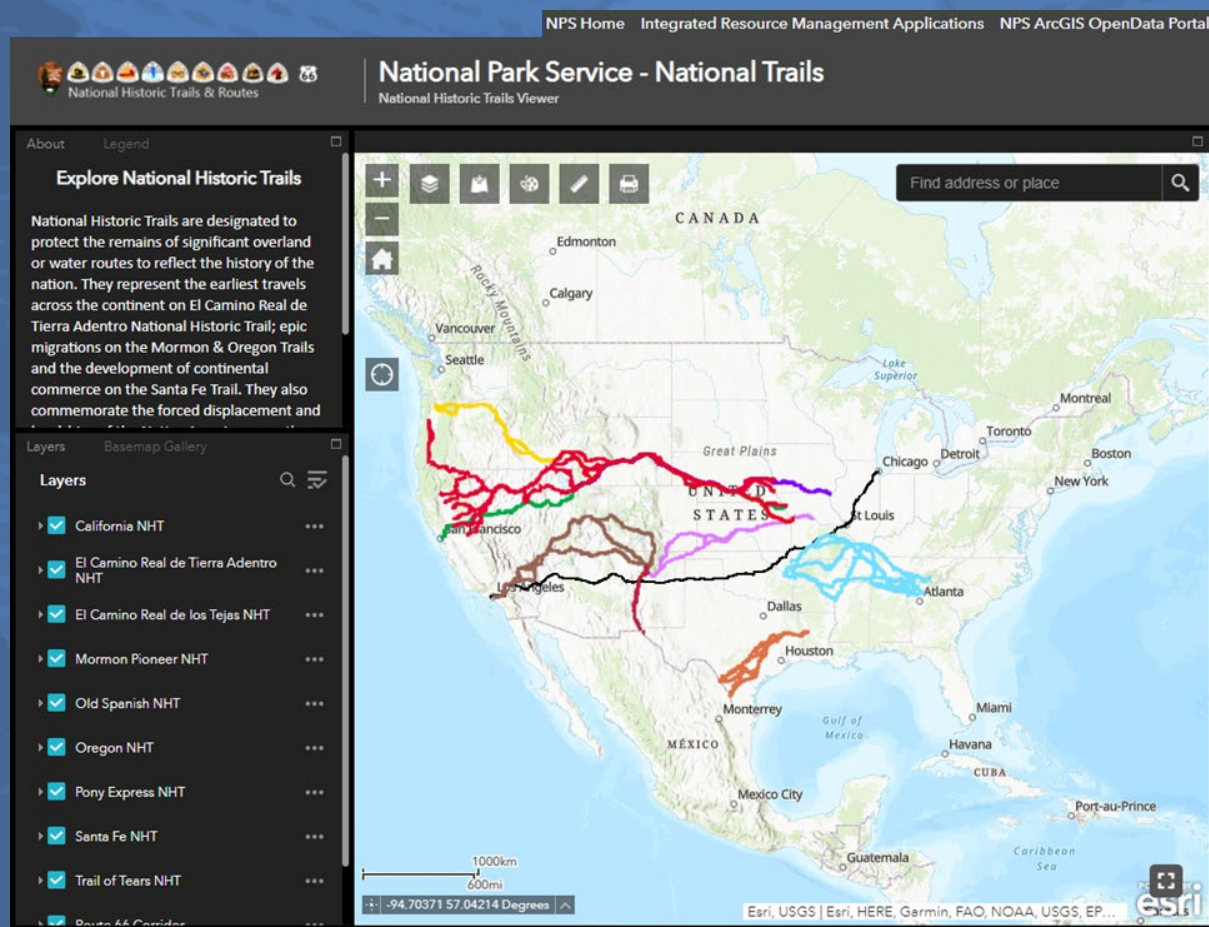
- Infinite Number of Partners
- 7835 Miles
- 11 States
- 126 Counties
- 30 Congressional Districts
- > 1070 Quadrangles





Public Data Sharing/Viewing

- National Historic Trail (NHT) Viewer
- Integrated Resource Management Applications (IRMA)
- NPS ArcGIS OpenData Portal
- ArcGIS Online (AGOL)
- NPMMap
- Web Maps/Apps/Storymaps





Public Data Sharing/Viewing


NPS ArcGIS OpenData Portal

- Access ArcGIS Online Public Spatial Data
- Download Different Data Types – KML, SHP, ETC

The screenshot displays the NPS ArcGIS OpenData Portal interface. At the top, the National Park Service logo and name are visible. The main content area features a map of the Oregon NHT (National Historic Trail) alignment, represented by a yellow line. To the right of the map, the dataset name "Oregon NHT" is displayed, along with the user "RIM NTIR" and the organization "National Park Service". Below the map, there are buttons for "View Map", "Download", and "More".

Summary

Oregon NHT congressionally designated alignment.



This is a vector line showing the approximate designated route of the Oregon national historic trail. The coordinates for this data set were generally heads-up digitized at a scale of 1:100,000 (or larger) off of a series of planning maps and DRGs using a variety of GIS software packages. The purpose of this feature service is to show the location of the Designated Route of the Oregon national historic trail. This data set represents a continuous representation of the trail as depicted in the Comprehensive Management Plan. The NHT alignment was identified before ground-verification could occur and consequently the designated trail does not always coincide with historic trail trace. This trail is not accessible nor developed for the entire length depicted in this data set. Do not cross private land without permission. The intended use of all data in the trail GIS library is to support diverse trail activities including planning, management, maintenance, research, and interpretation.

To view additional metadata and to download the shapefile, please visit the National

Details

- Dataset**
Feature Layer
- March 4, 2019**
Info Updated
- March 4, 2019**
Data Updated
- January 21, 2016**
Published Date
- 1 Records**
[View data table](#)
- Public**
Anyone can see this content
- Custom License**
[View license details](#)
- Relevant Area**

incouver
Seattle



Public Data Sharing/Viewing

Places to Go NPMaps

- Interactive Maps
- Created for each State
- Find Location to Experience the Trail
- This Info also in the NPS App



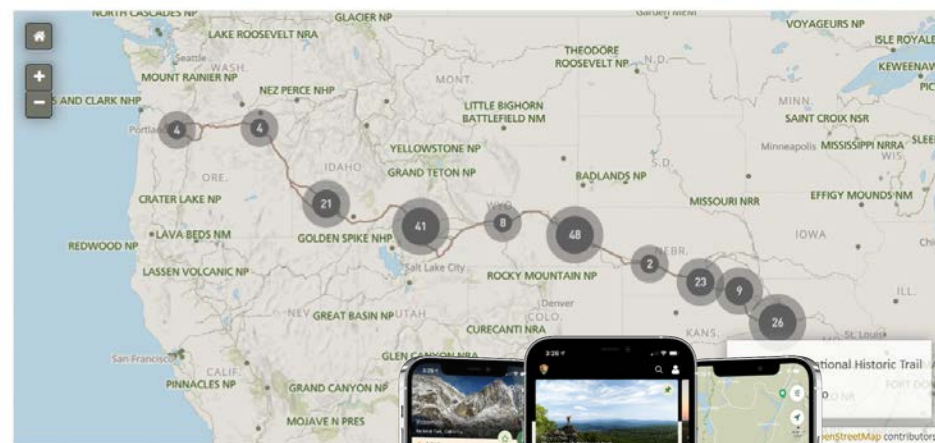
NPS.gov / Park Home / Plan Your Visit / Places To Go

Places To Go

The Oregon National Historic Trail Interactive Map!

Here is a fun, exciting way to find places to visit. Zoom in to find a location. Click on the yellow balloon of your choice to see the site name, address, access, image, and website. You'll find museums, interpretive centers, and historic sites that provide information and interpretation for the Oregon National Historic Trail.

Please contact each site before you go to obtain current information on closures, changes in hours, and fees.



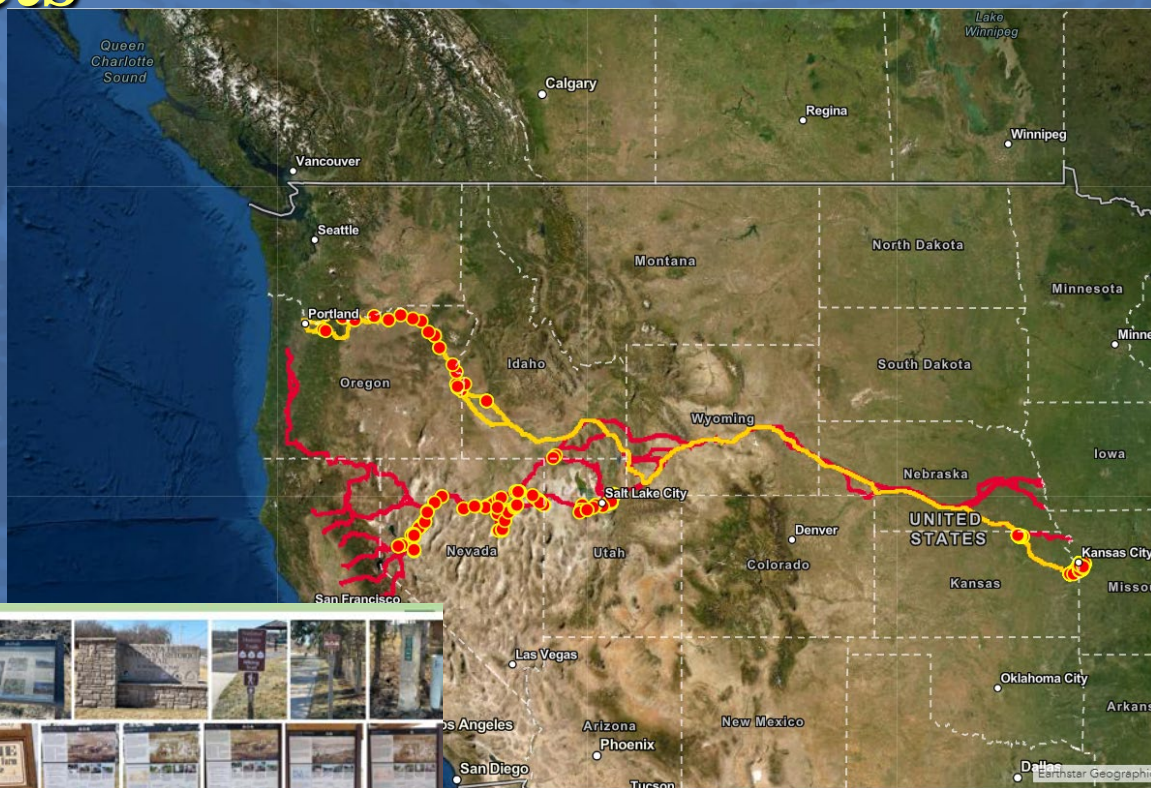
There are many places of history and commemoration on the trail.





On-Going Projects

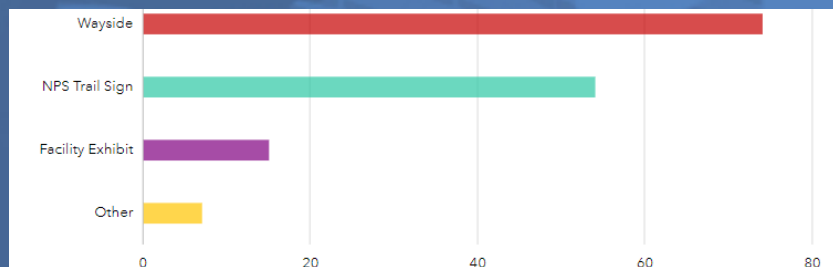
- NHT Wayside/
Sign Inventory





National Trails

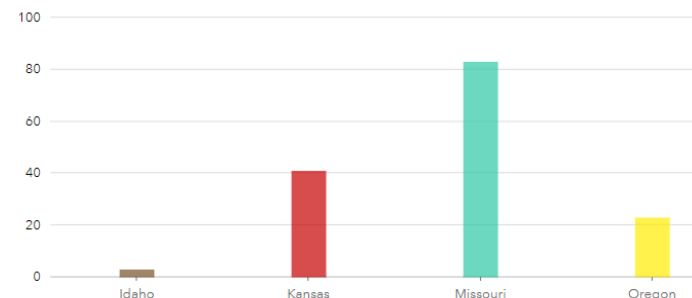
National Park Service
Department of the Interior



[Hide table](#)

☒ Empty categories [Sort](#)

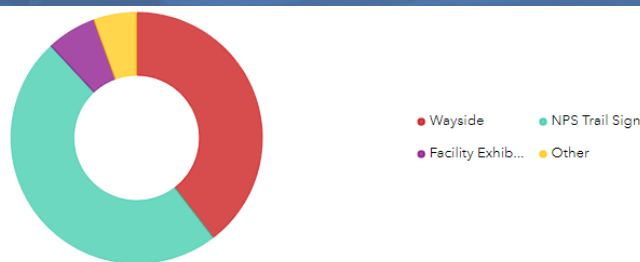
Answers	Count	Percentage
Wayside	74	49.33%
NPS Trail Sign	54	36%
Facility Exhibit	15	10%
Other	7	4.67%



[Hide table](#)

☐ Empty categories

Answers	Count	Percentage
Idaho	3	2%
Kansas	41	27.33%
Missouri	83	55.33%
Oregon	23	15.33%



[Hide table](#)

☒ Empty categories [Sort](#)

Answers	Count	Percentage
Wayside	93	38.27%
NPS Trail Sign	114	46.91%
Facility Exhibit	15	6.17%
Other	13	5.35%



[Hide table](#)

☐ Empty categories

Answers	Count	Percentage
Kansas	42	17.26%
Missouri	83	34.16%
Nevada	92	37.86%
Utah	26	10.7%

- Oregon NHT

- California NHT



On-Going Projects

- Visitor Use Experience
Interactive Web Maps
 - Activities:
 - Recreation -- (trails - hiking, walking, bike riding, horseback riding, Passport stamps, junior ranger
 - National Parks Along the Trail
 - Other Parks along the trail
 - Museums and Visitor Centers
 - Historic Buildings and Sites
 - Living History
 - American Indian Sites
 - Viewing Ruts and Swales
 - Nature



Into the Future...

- Working Together to Achieve Common Goals
- Data Sharing
- Feedback:
 - Regarding Potential Mapping Projects,
 - Public Engagement, Training, etc.
- Priorities



Questions





Contact



Brian Deaton
RIM Team Lead
GIS Specialist
505-819-9040
brian_deaton@nps.gov