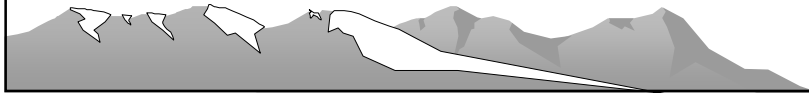


# **GPS & MAPPING SOFTWARE**

Dave Welch  
Galva, KS  
July 2010

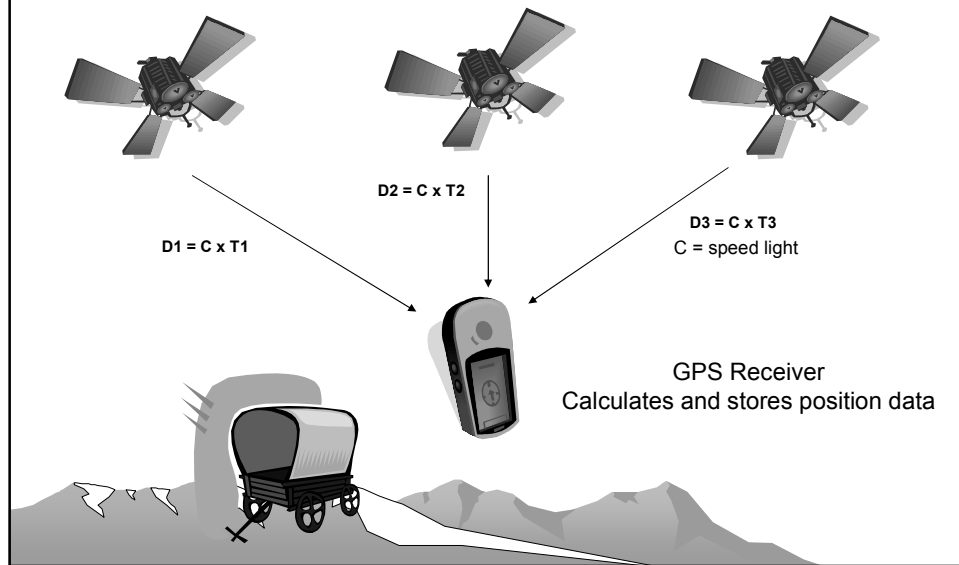


## **MAPPING PROCESS**


1. Collect data on the trail using a GPS (waypoints and track).
2. Download data from GPS to a computer with mapping software.
3. Edit data and add annotations as appropriate.
4. Final products: printed map or data exchange with other users.



# GPS – GLOBAL POSITIONING SYSTEM



**Mark Waypoint**

 **001**

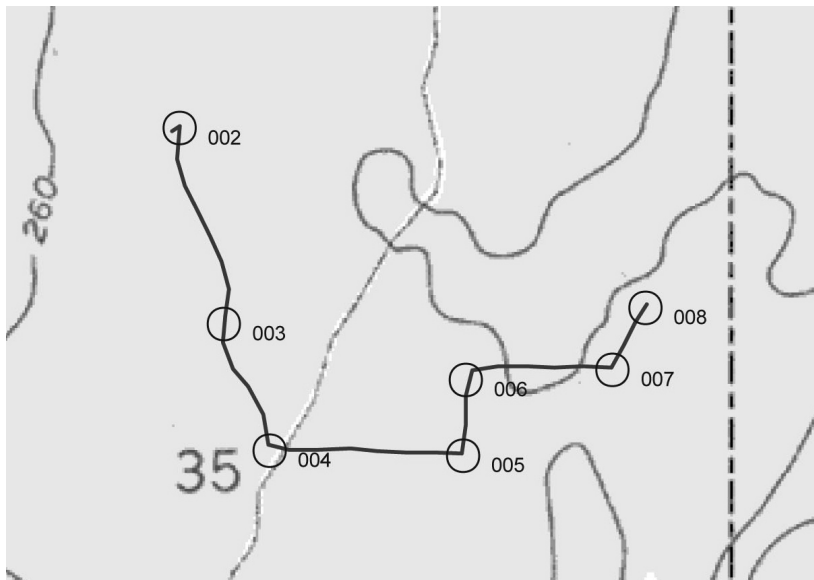
Note  
**24-OCT-05 11:25:52AM**

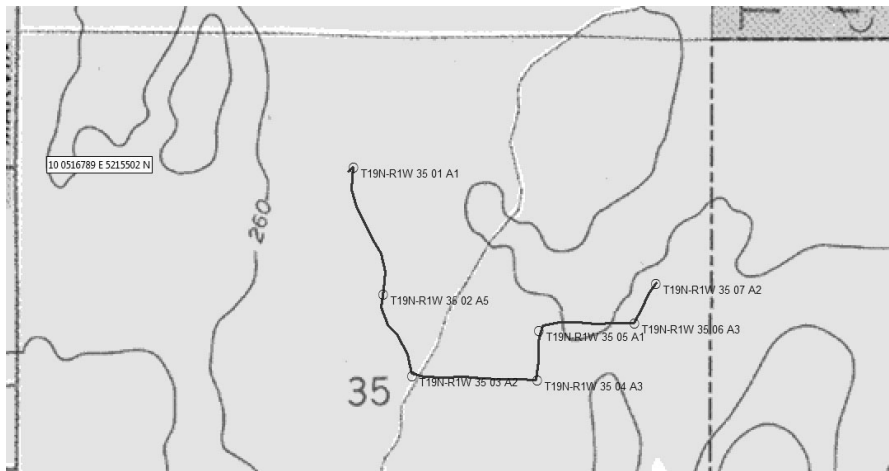
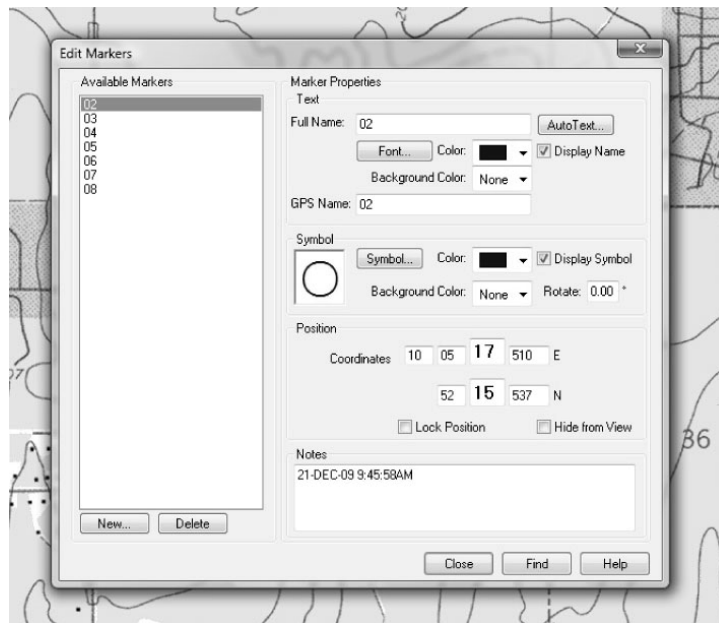
Location  
**N 38°51.404'**  
**W 094°47.938'**

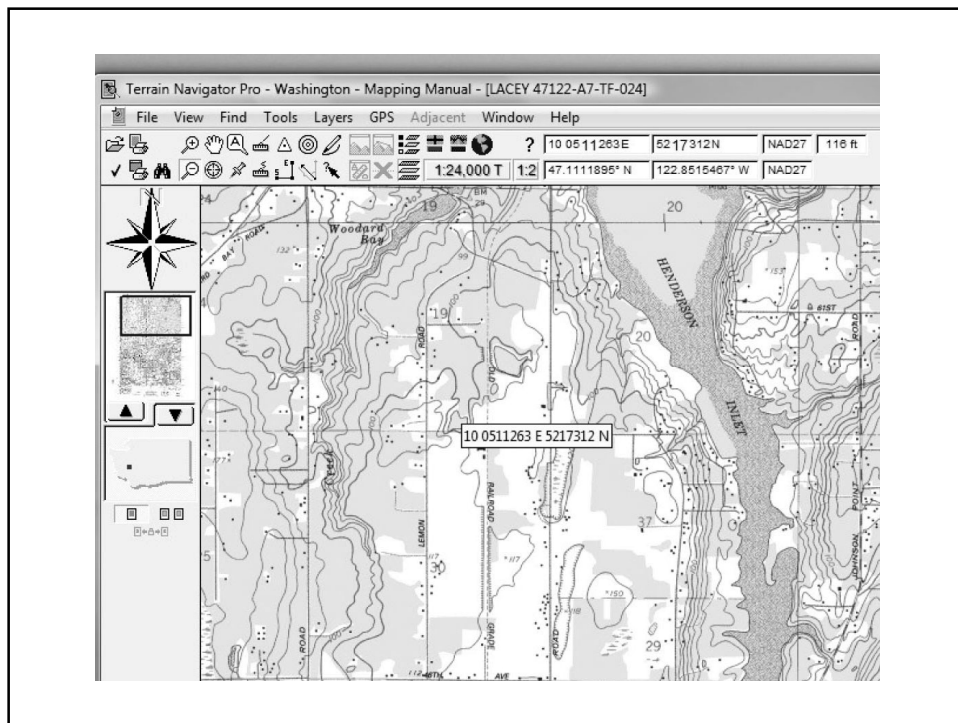
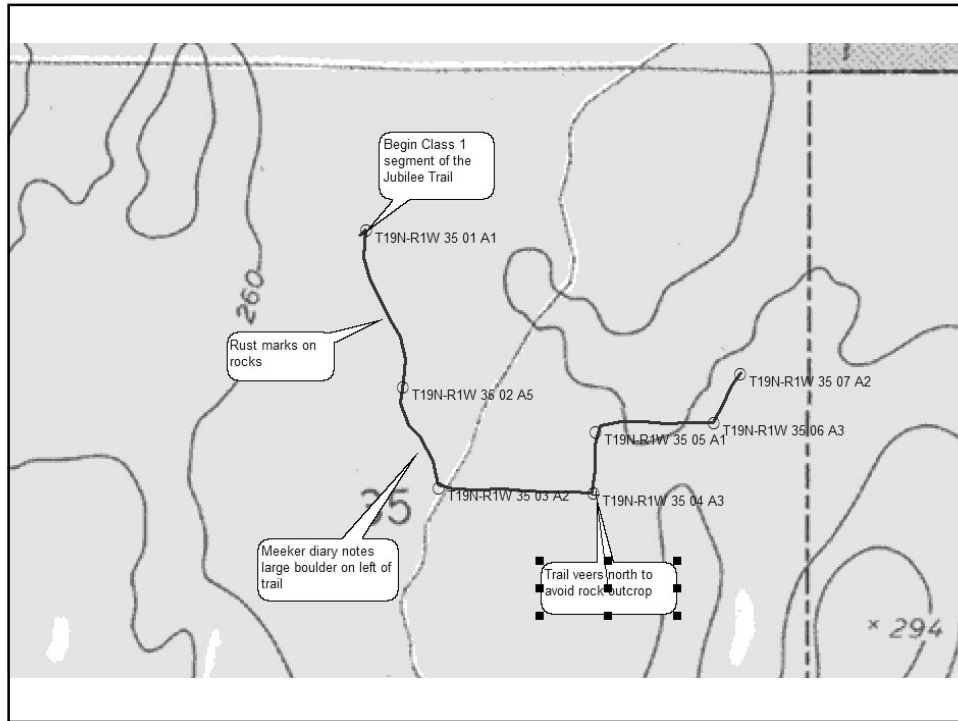
Elevation  
**1004'**

From Current Location  
**W 4'**

**Avg Map OK**

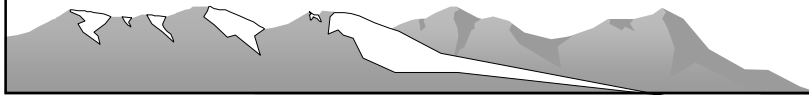






## **EXCHANGE OF MAPPING INFORMATION**

- Standard formats for exchange between Terrain Navigator Pro users (and some other software).
- Export to government GIS systems.



## **SUMMARY**

- See separate paper describing mapping process with GPS and mapping software.
- Both GPS and mapping software require investment in time and continued use to become proficient.

